

Overview of Career Advising

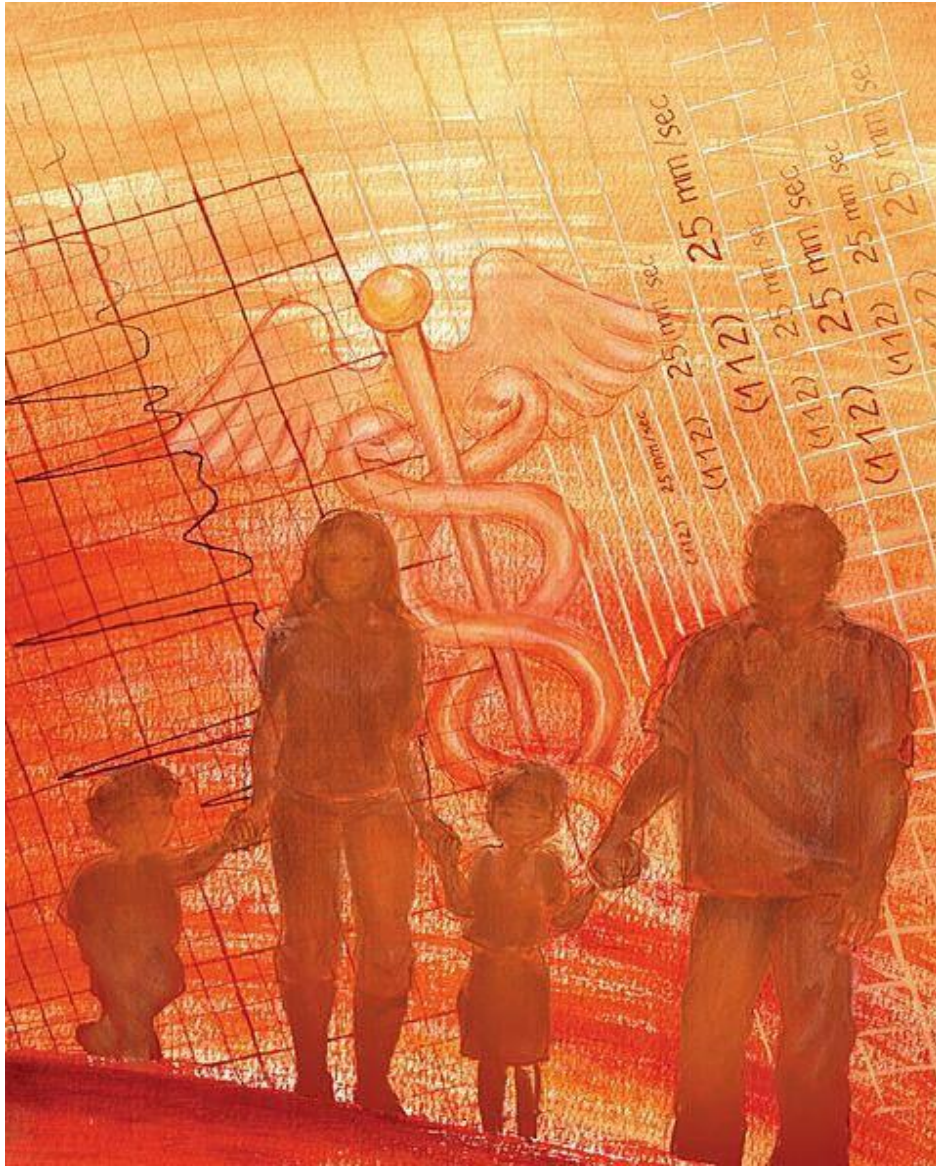
Molly Osborne, MD PhD

Associate Dean of Student Affairs

Find your niche



Career Advising: Primary Care



“In primary care you get to be part of your patient’s life story”

- Family Medicine
- General Internal Medicine
- Pediatrics
- Ob Gyn

Career Advising



Doctor Shortage

Number of medical students going into primary care has dropped 51% since 1997 (AAFP)

- 100,000 FP in 2009
- Need ~40,000 more in 10 years

Career Advising: Surgery



“ I have to be in the operating room”

General Surgery

- Ophthalmology
- Orthopedics
- Neurosurgery
- Urology
- Plastic Surgery
- Otolaryngology
- Physical Medicine & Rehabilitation

Career advising: Hospital based



- Emergency Medicine
- Anesthesiology
- Radiology
- Radiation Oncology
- Nuclear Medicine
- Pathology

Career Advising



Dermatology

Psychiatry

Neurology

Loan Repayment Programs

it's not about the money