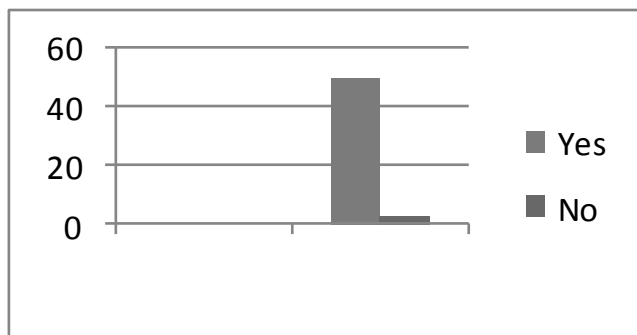


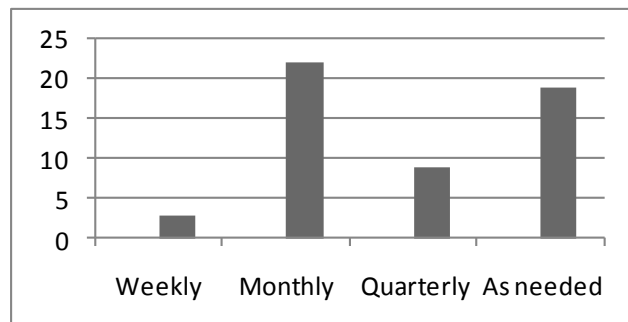
First Online PROH Survey

In 2008, the decision was made to more fully utilize electronic communications mechanisms to increase PROH member involvement and to reduce expenses. In the spring, we launched the first online PROH survey to guide the development of future online surveys. Below are charts reflecting the results of the 53 responses received from the 99 questionnaires sent.

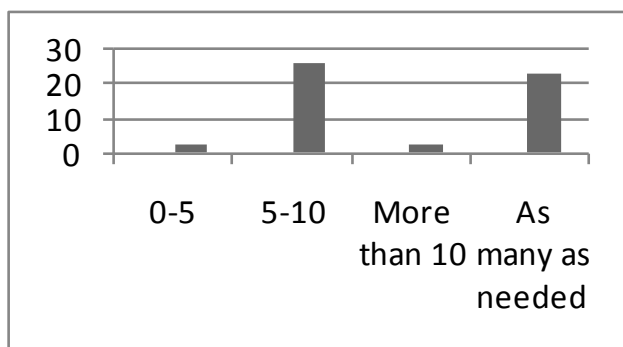
Would you like to be included in our mailing list for electronic surveys?



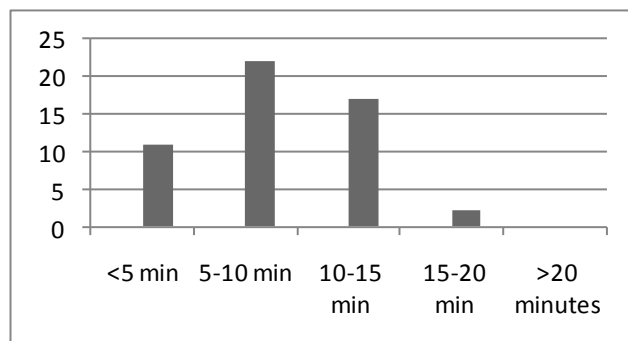
How frequently would you prefer to be contacted?



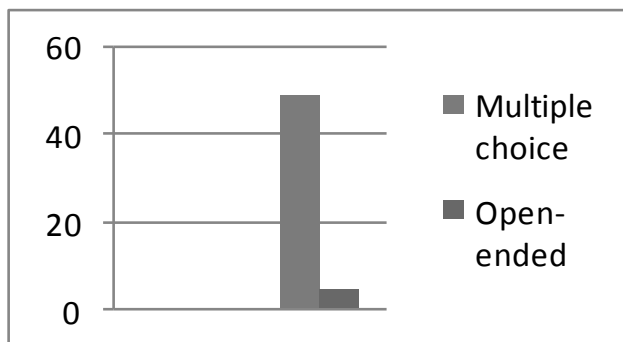
How many questions would you usually be willing to answer?



How much time would you be willing to spend filling out these surveys?



What types of survey questions would you prefer?



Would you be interested in participating in electronic studies that involved reviewing patient charts?

