

Installing SAS 9.4TS1M4

Windows only

Licensing limited to OHSU employees and students only

SAS Statistics is a software package used for statistical analysis. OHSU licenses the Windows version only. It is available for OHSU employees and students. The software is licensed only for academic purposes. Please note this this program is also available for use on general computers in both the BICC and LRC.

Please contact SAS at: 1-800-727-0025 for installation help and technical assistance. You will need:

- *Your site or customer number (<https://support.sas.com/techsup/contact/setinit2.html>)*
- *SAS software release*
- *Operating system*
- *Description of your problem*

Obtaining SAS Software

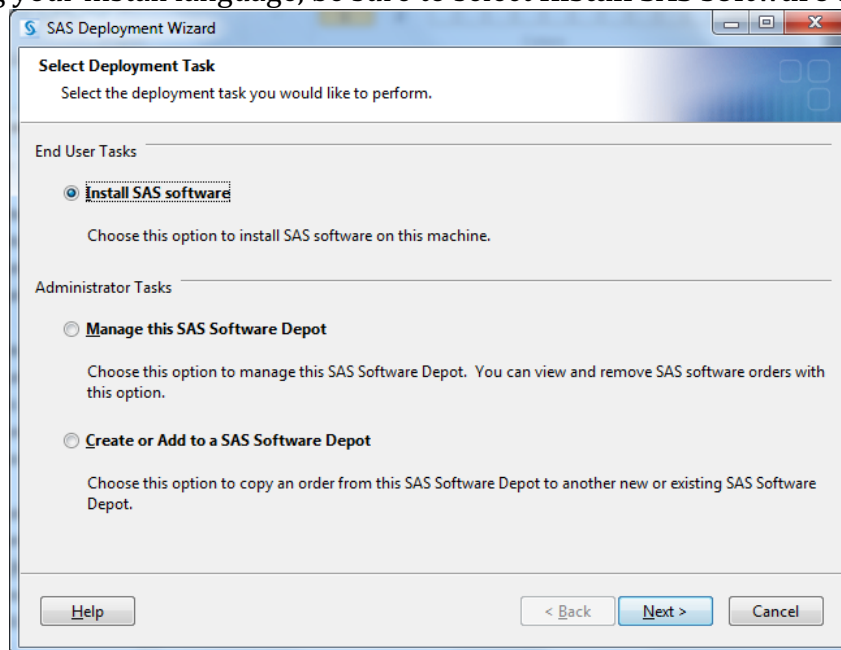
A USB drive with the latest SAS repoz is available for checkout at the Library Service Desk in the BICC.

License Files

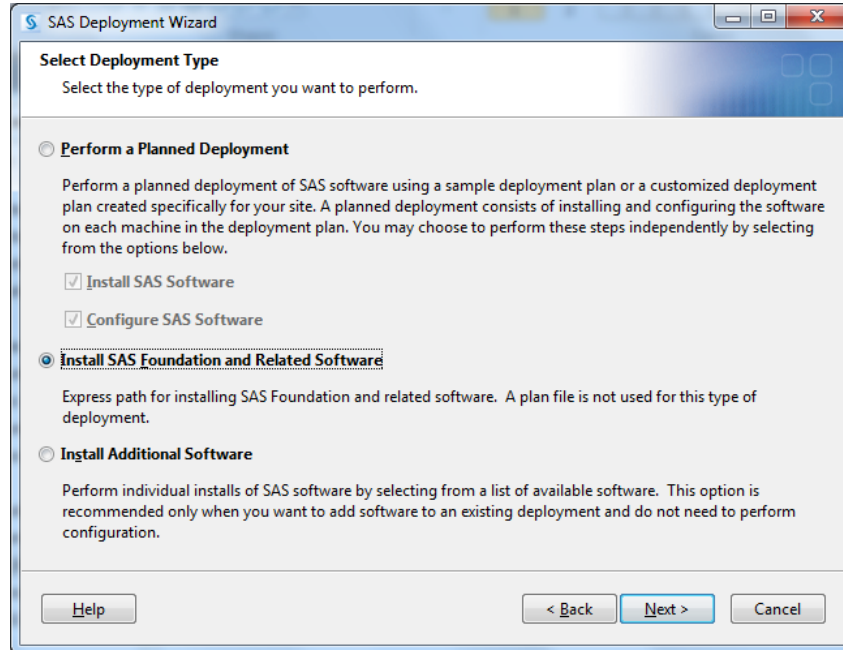
SAS must be licensed for use. Licenses expire yearly. The latest license can be obtained from the Library website under *Using The Library->Software*.

Installing SAS

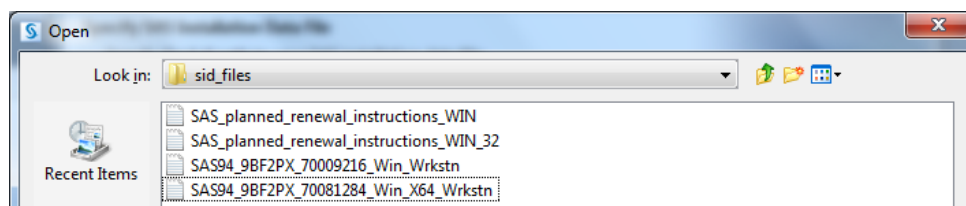
1. Before starting, be certain that any existing SAS products are fully uninstalled from your system.
2. Checkout a SAS USB Drive from the Library
3. Open **Install_SAS** from the USB Drive
4. After selecting your install language, be sure to select **Install SAS software** and click **Next**:



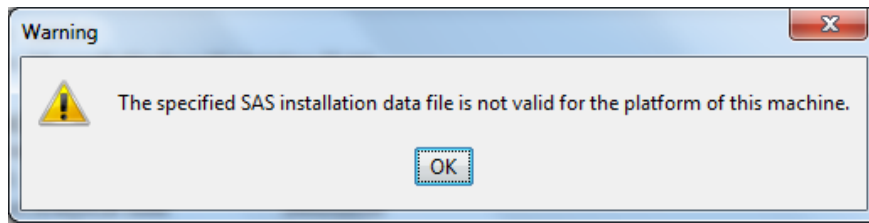
5. Enter the path to where you want SAS installed or accept the default (recommended)
6. Be sure "**Install SAS Foundation and Related Software**" is selected and click **Next**:



7. On the next screen select the Products you wish to install and click **Next** (*note our license may not cover all selected products, so when in doubt leave the default selected*)
8. On the next two screens select if you want to install the 32-bit or 64-bit versions of SAS Foundation and SAS Enterprise Guide. In most instances we recommend the 64-bit version. For more info you can read: <http://blogs.sas.com/content/sasdummy/2012/04/03/64-bit-versus-32-bit-apps/>
9. On the next screen select the Products you wish to install or leave the defaults checked and click **Next**
10. On the next screen select the Foundation Products you wish to install and click **Next**
11. On the next screen you will need to select a valid SID file to license SAS. **There is no valid license file on this USB. To obtain the latest license file please go to:** <http://www.ohsu.edu/xd/education/library/using/software.cfm>.
12. After downloading the correct License file package from the Library's website (be sure it is version 9.4 either 32-bit or 64-bit depending on the option selected above during install) unzip this file by right-clicking it, selecting Extract All and click Extract.
13. Back in the SAS install, click **Browse...** and navigate to where you extracted this file and select the correct SID for your install:

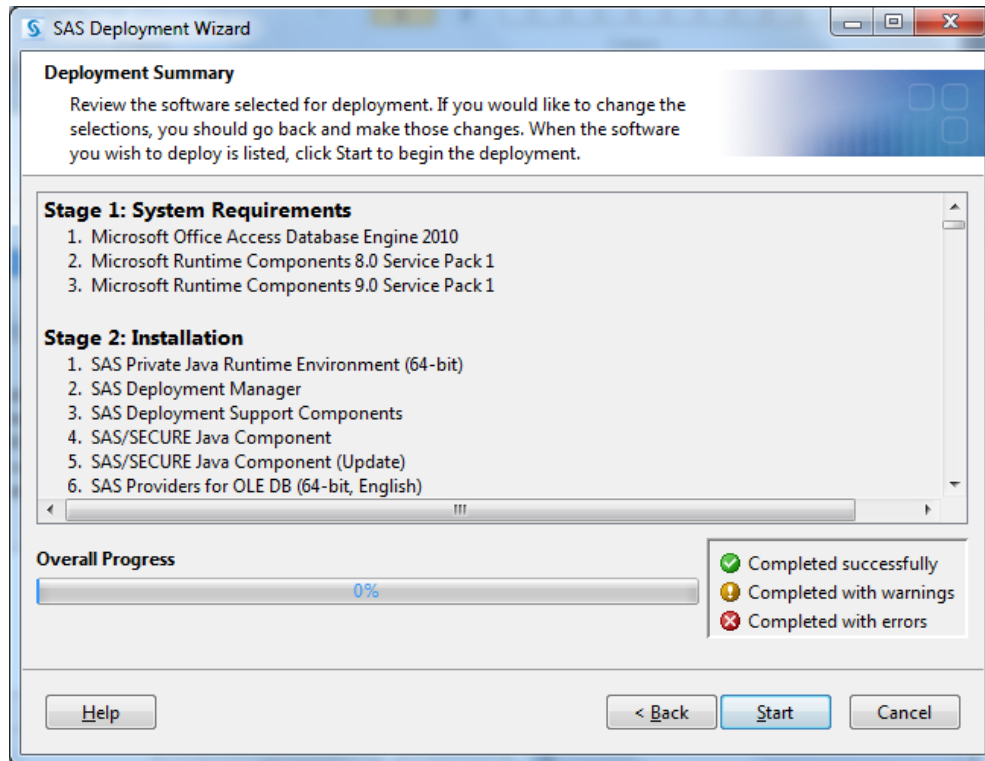


14. If you receive the following error message, be sure you have the right one selected:



15. On the next three screens select your language and region settings.

16. Next SAS will run a check on your system. If all goes well you should be presented with the Deployment start screen:



17. Clicking **Start** will begin installation. Please be patient as SAS installs all of its various components. A typical install can take up to 2 hours depending on the speed of your computer and hard drive.

Please contact SAS at: 1-800-727-0025 for installation help and technical assistance.

You will need:

- *Your site or customer number (<https://support.sas.com/techsup/contact/setinit2.html>)*
- *SAS software release*
- *Operating system*
- *Description of your problem*