

Upcoming Friends of Doernbecher Events

Friends of Doernbecher Bowl-a-Thon—*Bowling with Heart*

Save the date!

Sunday, February 12, 2012

Big Al's Bowling - Beaverton, OR

Join us for the first annual Friends of Doernbecher Bowl-a-Thon at Big Al's Bowling in Beaverton! Bowling is open to families and local businesses. If you are interested in participating please contact the Doernbecher Foundation to reserve your lanes today!

Follow the Yellow Brick Road

The 14th Annual Heart of Doernbecher Auction is right around the corner – **Saturday, April 21, 2012** at the Portland Art Museum. The auction committee is hard at work procuring live and silent auction items, selling sponsorship and planning all the important logistics. Here are some highlights:

- Regence is the presenting Sponsor this year
- Mark and Leslie Ganz are the honorary auction chairs
- We have a great patient family – the Albrights. Featuring Kaden and Kory Albright, 3-year-old twin boys born 15 weeks early at Doernbecher. They spent their first 105 days of life in the Doernbecher Neonatal Care Center (DNCC).

If you are interested in getting involved with the Heart of Doernbecher Auction, please contact Carolanne Wipfli at the Doernbecher Foundation.



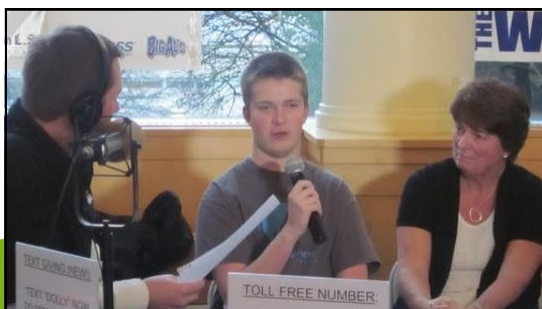
Kaden and Kory Albright

Happy Holidays and a Happy New Year from the Doernbecher Foundation!

Doernbecher Event Success Stories

Hunt for the Cure Radiothon

The annual Hunt for the Cure Radiothon held on December 8 and 9 was a huge success thanks to 99.5 The Wolf listeners and wonderful patient and hospital staff interviews. In two days, over \$250,000 was raised to support Doernbecher. Dru's Chapter President, Ellen Mitchell and son, Dru gave a heartfelt interview about their Doernbecher experiences and how they have been inspired to give back. Thank you Ellen and Dru for sharing your story with us!



Ellen and Dru Mitchell share their story at the 99.5 The Wolf Hunt for a Cure Radiothon.



DOERNBECHER
CHILDREN'S HOSPITAL
FOUNDATION

Bill's Corner

Hello Friends,

Happy Holidays! I think you'll all be happy to hear that Christmas came a little early for the Friends of Doernbecher this year. Santa heard your requests for better credit card machines and he granted your wish! That's right, the Doernbecher Foundation now has 8 brand new, user friendly credit card machines for use at your events. Please contact your Friends of Doernbecher liaison, Carolanne Wipfli at the Doernbecher Foundation to reserve credit card machines for your events. The sooner the better as they are used by other OHSU/Doernbecher groups too. As always, if you have any questions, please don't hesitate to contact me – bill.shake.1@frontier.com or 503-620-3162.

Your Friend,
Bill

Friends of Doernbecher Grant Program

This year marks the 13th year of the Friends of Doernbecher Grant program. Since its inception, the grant program has funded countless important research and healthcare projects in support of patients at Doernbecher Children's Hospital and beyond. Last year the program received 25 grant applications from doctors, students and researchers from OHSU and Doernbecher. Three recipients were selected and Friends awarded them a combined \$100,000. The grant application deadline is February 3, 2012. All Friends members are invited to participate on the grant selection committee. If you are interested in participating please contact Carolanne Wipfli at the Doernbecher Foundation.



2012 Events Calendar

Feb 12

Friends Bowl-a-Thon
Big Al's—Beaverton

Mar 18

Claudia Swanson Spring Brunch
Vancouver Hilton

Mar 18

2012 Shamrock Run
Waterfront Park
www.shamrockrunportland.com
To volunteer, e-mail [Mallory Tyler](mailto:Mallory.Tyler@doernbecherfoundation.org)

Apr 21

Heart of Doernbecher Auction
Portland Art Museum
5 p.m.
hod.doernbecherfoundation.org

Need a Holiday gift idea?

Dru's Chapter members are selling Waterproof / Fleece Blankets for \$30 each!

Contact Mallory Tyler at the Doernbecher Foundation for details 503-220-8344

Claudia Swanson Parent Packs

Three years ago, Claudia Swanson chapter member, Anne Schilling, had the idea to supply the hospital with much needed Parent Packs. These packs consist of several personal items families may need when they find themselves at the hospital unexpectedly. The packs are in high demand at the hospital particularly at the Doernbecher Emergency Department and for those families who have been transported to the hospital by PANDA—our pediatric and neonatal transport program.



All 150 Parent Packs were packaged lovingly by Claudia Swanson chapter members.

Doernbecher Foundation Contacts

Carolanne Wipfli

Assistant Director of Development
503-220-8341
wipfli@ohsu.edu

Mallory Tyler

Development Coordinator
503-220-8344
tylerma@ohsu.edu

April 28

Felicity Spring Fashion Show
Tualatin Country Club

May 6

Friends Volunteer Celebration
Doernbecher, Vey Auditorium

Aug 17-18

Douglas County Auction & Golf Tourney
Seven Feathers & Myrtle Creek Golf Club

Sept 17

Dru's Chapter Golf Tournament
Willamette Valley Country Club

Oct 27

Doernbecher Freestyle
Portland Art Museum

*To add an event to the calendar,
please contact Mallory Tyler at
tylerma@ohsu.edu*