

# OHSU Student Nurses Association

Klamath Falls campus



**T**his has been an exciting and rewarding time for the senior nursing students in Klamath Falls. With the help of our advisor Dr. Smith, our class presented a framed resolution, cards of support, and donation to the nursing students at Borough of Manhattan Community College. Located at Ground Zero, this school of nursing was badly damaged by the events of 9/11. Local media picked up this important story. Mid-year, our class had the opportunity to voice our opinions regarding curriculum development by presenting another resolution regarding student input into curricular decisions.

Toward the end of 2002, the seniors in Klamath Falls had the unique experience of presenting and publicly defending our own original theory-based research titled, The Image of the Nurse on Internet and Paper Greeting Card: An Expanded Replication, recently featured in The Oregonian.

Currently, our class is aggressively fundraising in hopes of attending the NSNA conference (Phoenix, Ariz.) in April. It is our intent to present our research findings to a national audience of peers and faculty experts.



Deborah James  
Senior Class  
SNA Co-Vice President, Klamath Falls campus



Klamath Falls campus

**T**his year is the first that all of the lecture classes are being taught and broadcasted from another campus to Klamath Falls. We had two classes during the summer term to get used to the cameras and microphones — not to say that everyone feels comfortable being on camera all morning! The learning style is different, but I do think that everyone has adjusted to the telecast from Ashland (or should I say the Rogue Valley Mall?!). The content of the classes was very intense this term, but our instructors on the Ashland campus were very good at working with us and helping however they could. Our instructors on the Klamath campus were awesome as well. They would answer our questions or hold study sessions and seminars even when they didn't have the time. (Thanks Terry!)

The Klamath Falls SNA group has been busy. We had a yard sale in October, bake sale in November, and a parking space raffle and hot chocolate stand at the Annual Snowflake Parade in December. We are trying to raise money for the seniors' pinning and for the NSNA Conference in April in Phoenix, Arizona. When the Red Cross Blood Mobile comes to campus, you can be sure we fill the volunteer spots. We have also had students participate in faculty meetings and curriculum revitalization project as student liaisons. Although we juniors sometimes feel like rooks, (okay, we are the rooks!) it is nice to participate in discussions regarding the OHSU School of Nursing curriculum.



Abby Tracy  
Junior Class  
SNA Co-Vice President, Klamath Falls campus

La Grande campus



The La Grande campus student senate is made up of four juniors and four seniors. Our goals for the remaining two terms include activities that range from t-shirt sales to NSNA convention plans.

We intend to send six students to the Annual NSNA convention in Phoenix, Ariz. In the past, the senate has purchased the airfare and registration for as many students as our funding would allow. We have designed OHSU t-shirts and sweatshirts for a fundraising project and are considering other fundraising ideas. A member of the senate is also working with a school staff member who is a former travel agent to assist us with the most cost effective travel plan.

Second on our agenda is to make various changes in our bylaws. This is quite a project! It is our goal to have the changes completed and voted on by the student body by the end of spring quarter. In addition, a member of our senate is coordinating graduation activities including a senior slide show and a senate-funded student dinner.

The La Grande campus also has a very active nursing club that is busy at work planning many social activities, learning experiences and fundraisers for our student body. Their goals include: guest speakers on subjects such as acupuncture, reiki, massage therapy and stress relief. A bowling night/league and movie night are also in the works! The nursing club is also entertaining the idea of adopting a highway for litter cleanup. One major function of the nursing club is to make themselves available to pre-nursing students as a resource for questions and concerns. Once a year the nursing club hosts a pre-nursing workshop. Junior and Senior nursing students as well as faculty and staff invite all pre-nursing students to a question-answer session before applications are due. This has proven to be very successful in the past years. They also set up a booth at the EOU major fair to promote nursing as a profession.

*Brenna Stamper*

Brenna Stamper  
SNA Vice President, La Grande campus



Ashland campus

It's been a challenge for the Student Nurses Association on the Ashland campus to get all of our students together. Our junior students were not on campus much during the fall term. Winter term presented a better schedule, and we planned many more activities.

We had a great *Welcome to Nursing School* picnic for our junior students in August. The seniors were able to meet their junior student buddies. We assigned a senior nursing student to one or two junior students as buddies. This gave the junior student someone to contact if they have questions or concerns that are better answered by a student rather than a faculty member.

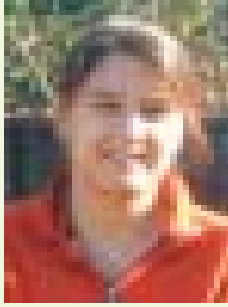
We are hoping to send many students to the NSNA convention in Phoenix this spring. Also, in the works for the Ashland campus in the spring is a job fair. We plan to invite nurse recruiters from many hospitals to join us. Prior to the nursing fair we are planning a resume-writing seminar, so that students can have resumes ready to pass out to prospective employers.

We are looking forward to a fun and exciting year on the Ashland campus.

*Randi Singleton*

Randi Singleton  
SNA President, Ashland campus

Portland campus



OHSU's nursing students have already had a busy year. One of our main outlets for finding various activities outside the hefty load of schoolwork is with the Student Nurses Association. I am proud of the progress SNAP's committees have made this year.

Every year SNAP sends students to the NSNA conference. The conferences enable students to connect with other nursing students across the nation. Students also learn valuable leadership skills, such as learning how to properly and legally run their committees, and debate and vote on issues related to nursing across the nation. The conferences are also a good place to begin looking at the current nursing job market and other educational possibilities. The attendees bring new information back to the school and present it to the student body.

SNAP depends on the fundraising nursing students do every year. Rosie Le, our senior fundraising chair, has done a tremendous job putting together some events to raise money to help send students to the National Student Nurses Association's mid-year and annual conferences. Rosie and several other students organized an event at the Corn Maze on Sauvie Island. Nursing students from all over Portland came to participate in this event that included live music, food, and walking through the maze.

One of SNAP's goals includes the ability to find activities where senior nursing students can connect with junior nursing students. We are able to do this through a mentoring program, which our professional development chairperson, Jennifer Quiopotla, organized at the beginning of the year. We also have an activity chairperson, Erin Auer, who creates activities like the end-of-term gatherings, allowing students a chance to reflect on the ups and downs of the year.

Personally, I encourage students to find and maintain involvement in activities away from studying to maintain balance in our lives.

A handwritten signature in black ink that reads "Stacy LeFebvre".

Stacy LeFebvre  
SNA President, Portland Campus

### OHSU School of Nursing Program Offerings

- Bachelor of Science Degree Program
- Bachelor of Science Degree Program for Registered Nurses
- Master of Science Degree Program

Variety of specialties offered, including:

- Clinical nurse specialist
- Nurse-midwifery
- Nurse practitioner
- Graduate entry options
- RN to MS option

- Post-master's certificate option
- PhD program
- Post-doctoral program

For more information, visit the School's Web site at [www.ohsu.edu/son](http://www.ohsu.edu/son), call 503 494-7725 or e-mail [proginfo@ohsu.edu](mailto:proginfo@ohsu.edu).