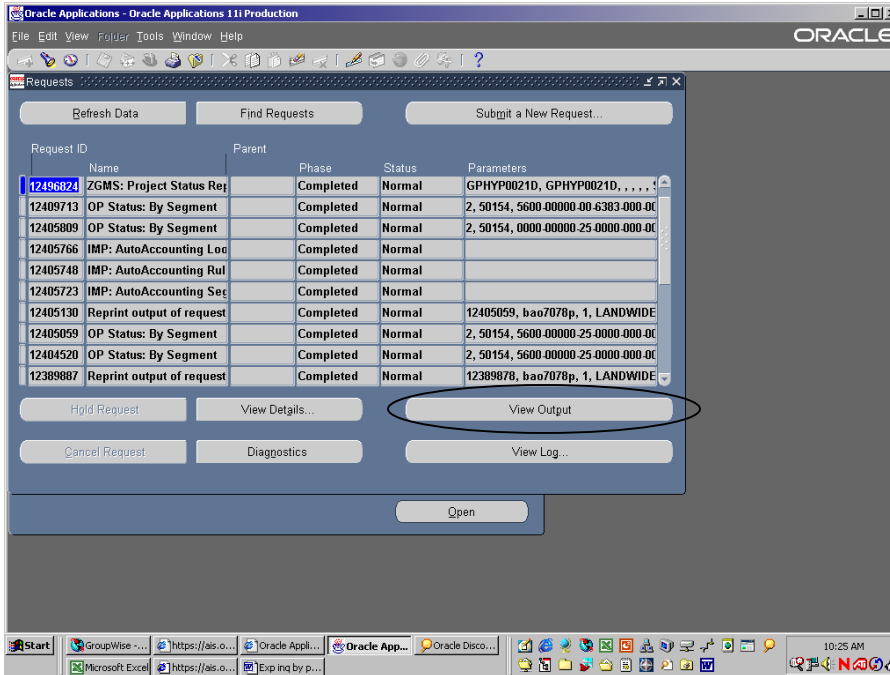
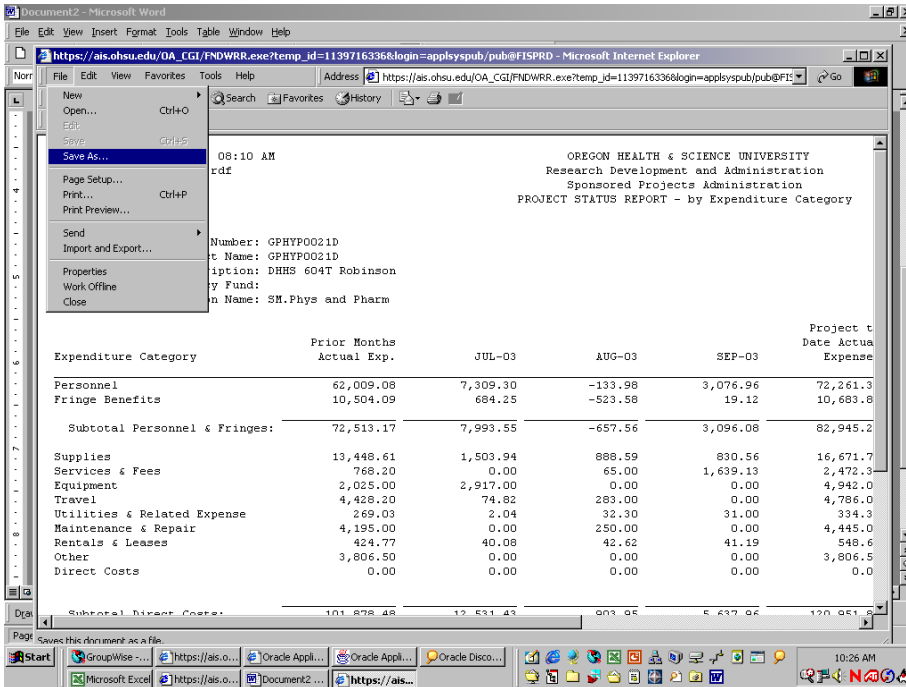


Exporting Oracle printed reports / Excel formatting

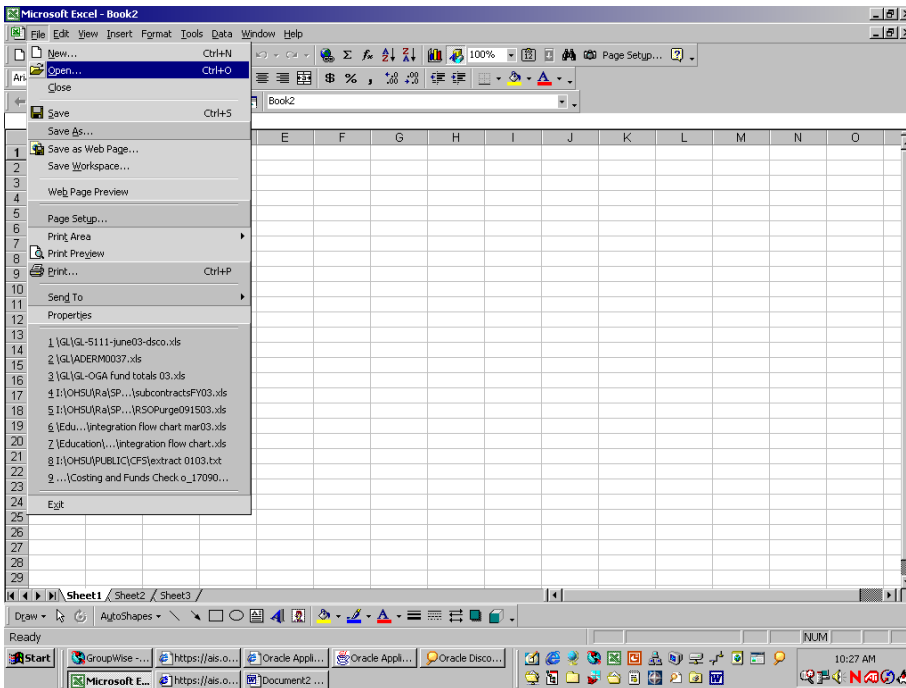


The screenshot shows a Microsoft Internet Explorer browser window displaying a printed report. The report is titled "PROJECT STATUS REPORT - by Expenditure Category" and provides financial data for various expenditure categories. The data is presented in a table format with columns for Expenditure Category, Prior Months Actual Exp., JUL-03, AUG-03, SEP-03, and Project Date Actual Expense.

Expenditure Category	Prior Months Actual Exp.	JUL-03	AUG-03	SEP-03	Project Date Actual Expense
Personnel	62,009.08	7,309.30	-133.98	3,076.96	72,261.3
Fringe Benefits	10,504.09	684.25	-523.58	19.12	10,683.8
Subtotal Personnel & Fringes:	72,513.17	7,993.55	-657.56	3,096.08	82,945.2
Supplies	13,448.61	1,503.94	888.59	830.56	16,671.7
Services & Fees	768.20	0.00	65.00	1,639.13	2,472.3
Equipment	2,025.00	2,917.00	0.00	0.00	4,942.0
Travel	4,428.20	74.82	283.00	0.00	4,786.0
Utilities & Related Expense	269.03	2.04	32.30	31.00	334.3
Maintenance & Repair	4,195.00	0.00	250.00	0.00	4,445.0
Rentals & Leases	424.77	40.08	42.62	41.19	548.6
Other	3,806.50	0.00	0.00	0.00	3,806.5
Direct Costs	0.00	0.00	0.00	0.00	0.0
Subtotal Direct Costs:	101,828.48	12,531.43	903.05	5,637.94	120,961.9



Open Excel, open report text file.



Make sure to choose "all files" type.

Microsoft Excel - Book2

File Edit View Insert Format Tools Data Window Help

Arial 10

Text Import Wizard - Step 2 of 3

This screen lets you set field widths (column breaks).

Lines with arrows signify a column break.
 To CREATE a break line, click at the desired position.
 To DELETE a break line, double click on the line.
 To MOVE a break line, click and drag it.

Data preview

8.55	-657.56	3,096.08	82,945.24	72
8.94	888.59	830.56	16,671.70	68
9.00	65.00	1,639.13	2,472.33	
7.00	0.00	0.00	4,942.00	

Cancel < Back Next > Finish

Sheet1 / Sheet2 / Sheet3

Draw AutoShapes

Ready

GroupWise... https://ais.o... Oracle Appli... Oracle Appli... Oracle Disco...

Microsoft E... https://ais.o... Document2...

10:31 AM

Microsoft Excel - Project Status Report - _021003.txt

File Edit View Insert Format Tools Data Window Help

Arial 10

WADP1\USR\KEETONG\temp\Project Status Report - _021003.txt

Expenditure Category	Actual Exp.	3-Jul	3-Aug	3-Sep	Project to Date Actual Expenses	Project Budget	Encumbranc	Funds Available	Percent Funds Remaining
Personnel	62,009.08	7,309.30	-133.98	3,076.96	72,261.36	51,905.00	0	-20,356.36	-39.22%
Fringe Benefits	10,504.09	684.25	-523.58	19.12	10,689.88	20,899.00	0	10,215.12	48.88%
Subtotal Personnel & Fringes:	72,513.17	7,993.55	-657.56	3,096.08	82,945.24	72,804.00	0	-10,141.24	-13.93%
Supplies	13,448.61	1,503.94	888.59	830.56	16,671.70	68,979.37	567.94	51,739.73	75.01%
Services & Fees	768.2	0	65	1,639.13	2,472.33	0	67.5	-2,539.83	0.00%
Equipment	2,025.00	2,917.00	0	0	4,942.00	0	0	-4,942.00	0.00%
Travel	4,428.20	74.82	283	0	4,786.02	1,530.00	0	-3,256.02	-212.81%
Utilities & Related Expense	269.03	2.04	32.3	31	334.37	0	0	-334.37	0.00%
Maintenance & Repair	4,195.00	0	250	0	4,445.00	0	0	-4,445.00	0.00%
Rentals & Leases	424.77	40.08	42.62	41.19	548.66	0	0	-548.66	0.00%
Other	3,806.50	0	0	0	3,806.50	0	0	-3,806.50	0.00%
Direct Costs	0	0	0	0	0	0	0	0	0.00%
Subtotal Direct Costs:	101,878.48	2,531.43	903.95	5,637.96	120,951.82	143,313.37	635.44	21,726.11	15.16%
F & A Costs	46,984.03	3,173.78	2,190.58	2,845.03	57,193.42	72,422.36	324.07	14,904.87	20.58%
TOTAL PROJECT EXPENSES:	150,862.51	5,705.21	3,094.53	8,482.99	178,145.24	215,735.73	959.51	36,630.98	16.98%

Project Status Report - _021003/

Draw AutoShapes

Ready

GroupWise... https://ais.o... Oracle Appli... Oracle Appli... Oracle Disco...

https://ais.o... Document2... Book2 Project Stat...

10:32 AM