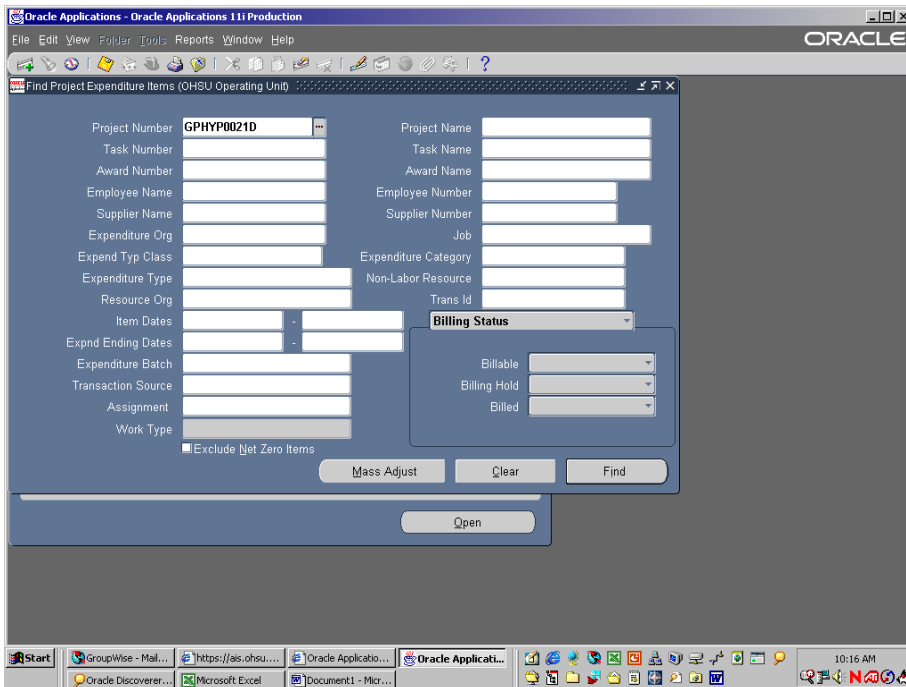
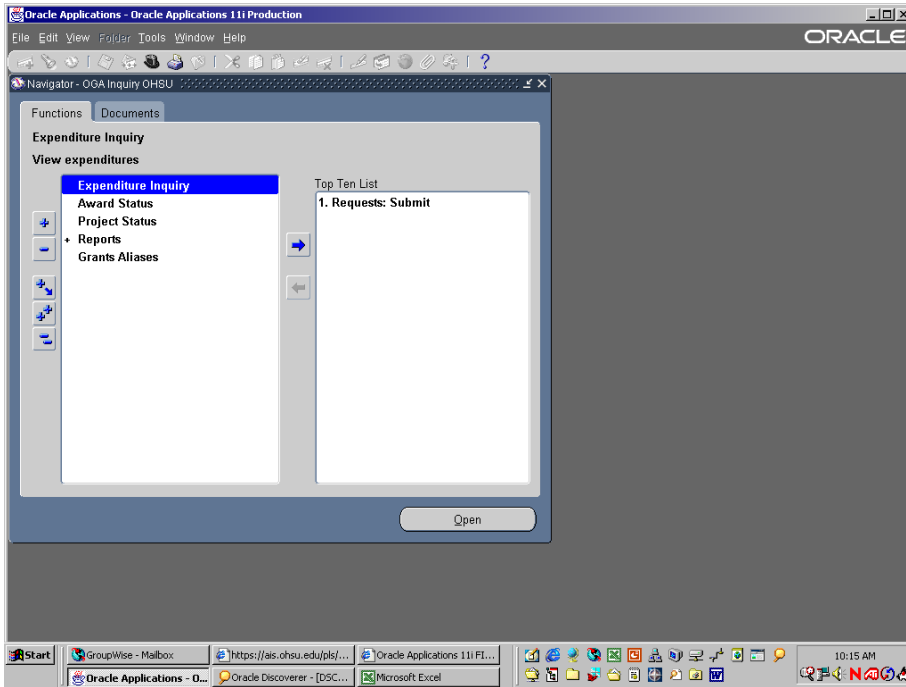


Expenditure inquiry/export by project



Oracle Applications - Oracle Applications 11i Production

File Edit View Folder Tools Reports Window Help

Project Expenditure Items (OHSU Operating Unit)

Trans Id	Project	Task	Award	Expend Type	Item Date	Employee/Supplier
1277193	GPHYP0021D	1	APHYP0021	GR-Equipment	01-JUL-2002	LEICA INCORPORATED
1281153	GPHYP0021D	1	APHYP0021	GR-F & A Costs	01-JUL-2002	
1287912	GPHYP0021D	1	APHYP0021	GR-Unclassifie	12-JUL-2002	Robinson, David
1288427	GPHYP0021D	1	APHYP0021	GR-Unclassifie	12-JUL-2002	Mckenzie, Mary
1288914	GPHYP0021D	1	APHYP0021	GR-Student W	12-JUL-2002	Aboelela, Sally
1293675	GPHYP0021D	1	APHYP0021	GR-Othr Payro	12-JUL-2002	Robinson, David
1294138	GPHYP0021D	1	APHYP0021	GR-Othr Payro	12-JUL-2002	Mckenzie, Mary
1294139	GPHYP0021D	1	APHYP0021	GR-Othr Payro	12-JUL-2002	Mckenzie, Mary
1294592	GPHYP0021D	1	APHYP0021	GR-Othr Payro	12-JUL-2002	Aboelela, Sally
1297522	GPHYP0021D	1	APHYP0021	GR-F & A Costs	12-JUL-2002	

Run Request... Totals Item Details

Mass Adjust Clear Find

Open

Start GroupWise - Mail... https://ais.ohsu... Oracle Applicatio... Oracle Applicati... Oracle Discoverer... Microsoft Excel Document1 - Micr... 10:17 AM

Oracle Applications - Oracle Applications 11i Production

File Edit View Folder Tools Reports Window Help

New

Open

Save

Save and Proceed

Next Step

Export

Place on Navigator

Log on as a Different User...

Switch Responsibility...

Print...

Close Form

Exit Oracle Applications

OHSU Operating Unit

Trans Id	Project	Task	Award	Expend Type	Item Date	Employee/Supplier
1277193	GPHYP0021D	1	APHYP0021	GR-Equipment	01-JUL-2002	LEICA INCORPORATED
1281153	GPHYP0021D	1	APHYP0021	GR-F & A Costs	01-JUL-2002	
1287912	GPHYP0021D	1	APHYP0021	GR-Unclassifie	12-JUL-2002	Robinson, David
1288427	GPHYP0021D	1	APHYP0021	GR-Unclassifie	12-JUL-2002	Mckenzie, Mary
1288914	GPHYP0021D	1	APHYP0021	GR-Student W	12-JUL-2002	Aboelela, Sally
1293675	GPHYP0021D	1	APHYP0021	GR-Othr Payro	12-JUL-2002	Robinson, David
1294138	GPHYP0021D	1	APHYP0021	GR-Othr Payro	12-JUL-2002	Mckenzie, Mary
1294139	GPHYP0021D	1	APHYP0021	GR-Othr Payro	12-JUL-2002	Mckenzie, Mary
1294592	GPHYP0021D	1	APHYP0021	GR-Othr Payro	12-JUL-2002	Aboelela, Sally
1297522	GPHYP0021D	1	APHYP0021	GR-F & A Costs	12-JUL-2002	

Run Request... Totals Item Details

Mass Adjust Clear Find

Open

Start GroupWise - Mail... https://ais.ohsu... Oracle Applicatio... Oracle Applicati... Oracle Discoverer... Microsoft Excel Document1 - Micr... 10:17 AM

Oracle Applications - Oracle Applications 11i Production

File Edit View Folder Tools Reports Window Help

Project Expenditure Items (OHCV Operating Unit)

Trans Id	Project	Task	Award	Expend Type	Item Date	Employee/Supplier
1643723	GPHYP0021D	1	APHYP002	GR-Student W	15-NOV-2002	Aboelela, Sally V
1647346	GPHYP0021D	1	APHYP002	GR-Othr Payro	15-NOV-2002	Robinson, David
1648225	GPHYP0021D	1	APHYP002	GR-Othr Payro	15-NOV-2002	Aboelela, Sally V
1649616	GPHYP0021D	1	APHYP002	GR-F & A Cost	15-NOV-2002	
1664604	GPHYP0021D	1	APHYP002	GR-Telecomm	20-NOV-2002	
1665425	GPHYP0021D	1	APHYP002	GR-Surgical S	30-NOV-2002	
1666432	GPHYP0021D	1	APHYP002	GR-Misc Renta	31-OCT-2002	
1666433	GPHYP0021D					
1666434	GPHYP0021D					
1666435	GPHYP0021D					

Decision

100 more records have been retrieved, and an unknown number of additional records remain.

Continue Stop Continue to End

Run Request... Totals Item Details

Mass Adjust Clear Find

Open

10:19 AM

https://ais.ohsu.edu/pls/FISPRD/fndgfm/fnd_gfm.get/48922137268/489218/fnd_gfm.xls - Microsoft Internet Explorer

File Edit View Insert Format Tools Data

Address https://ais.ohsu.edu/pls/FISPRD/fndgfm/fnd_gfm.get/48922137268/489218/fnd_gfm.xls

Links Customize Links

A1	Trans Id	Project	Task	Award	Expend Type	Item Date	Employee/Quantity	UOM	Proj Func	Project Bu	Accrued R	Bill Amour
2	1277193	GPHYP00	1	APHYP00; GR-Equipr	1-Jul-02	LEICA INC	1000	Currency	1000	1000		
3	1281153	GPHYP00	1	APHYP00; GR-F & A	1-Jul-02		0	Currency	510	510		
4	1287912	GPHYP00	1	APHYP00; GR-Unclas	12-Jul-02	Robinson,	1	Currency	1030.81	1030.81		
5	1288427	GPHYP00	1	APHYP00; GR-Unclas	12-Jul-02	Mckenzie,	1	Currency	961.54	961.54		
6	1288914	GPHYP00	1	APHYP00; GR-Studer	12-Jul-02	Aboelela,	1	Currency	769.23	769.23		
7	1293675	GPHYP00	1	APHYP00; GR-Othr P	12-Jul-02	Robinson,	1	Currency	306.42	306.42		
8	1294138	GPHYP00	1	APHYP00; GR-Othr P	12-Jul-02	Mckenzie,	1	Currency	-0.02	-0.02		
9	1294139	GPHYP00	1	APHYP00; GR-Othr P	12-Jul-02	Mckenzie,	1	Currency	298.29	298.29		
10	1294592	GPHYP00	1	APHYP00; GR-Othr P	12-Jul-02	Aboelela,	1	Currency	4.78	4.78		
11	1297522	GPHYP00	1	APHYP00; GR-F & A	12-Jul-02		0	Currency	1719.24	1719.24		
12	1301064	GPHYP00	1	APHYP00; GR-Labora	19-Jul-02		1	Currency	7.45	7.45		
13	1301065	GPHYP00	1	APHYP00; GR-Labora	19-Jul-02		1	Currency	6.91	6.91		
14	1301066	GPHYP00	1	APHYP00; GR-Labora	19-Jul-02		1	Currency	6.94	6.94		
15	1301401	GPHYP00	1	APHYP00; GR-F & A	19-Jul-02		0	Currency	10.86	10.86		
16	1303155	GPHYP00	1	APHYP00; GR-Labora	23-Jul-02		1	Currency	11.33	11.33		
17	1304429	GPHYP00	1	APHYP00; GR-F & A	23-Jul-02		0	Currency	5.78	5.78		
18	1311888	GPHYP00	1	APHYP00; GR-Oxyge	29-Jul-02		1	Currency	12.94	12.94		
19	1312783	GPHYP00	1	APHYP00; GR-Labora	19-Jul-02	SANTA CF	220	Currency	220	220		
20	1312784	GPHYP00	1	APHYP00; GR-Freight	19-Jul-02	SANTA CF	22.5	Currency	22.5	22.5		
21	1313549	GPHYP00	1	APHYP00; GR-F & A	29-Jul-02		0	Currency	6.6	6.6		
22	1313550	GPHYP00	1	APHYP00; GR-F & A	19-Jul-02		0	Currency	123.68	123.68		
23	1315995	GPHYP00	1	APHYP00; GR-Unclas	26-Jul-02	Robinson,	1	Currency	1030.81	1030.81		
24	1316523	GPHYP00	1	APHYP00; GR-Unclas	26-Jul-02	Mckenzie,	1	Currency	961.54	961.54		
25	1317019	GPHYP00	1	APHYP00; GR-Studer	26-Jul-02	Aboelela,	1	Currency	769.23	769.23		
26	1320524	GPHYP00	1	APHYP00; GR-Othr P	26-Jul-02	Robinson,	1	Currency	306.44	306.44		

Unknown Zone