



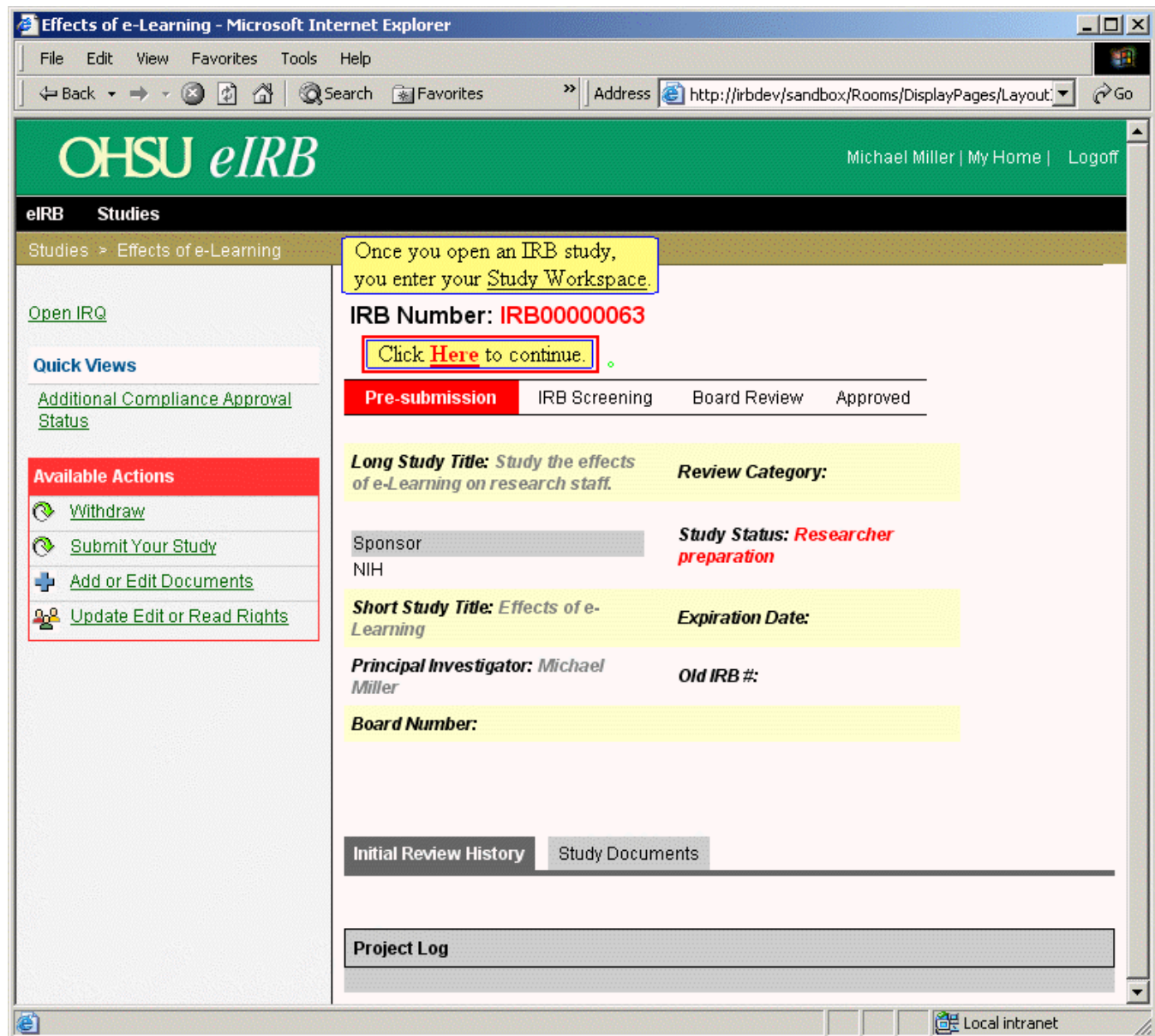
## **eIRB - Overview of Study Workspace**

June 30, 2004



## Effects of e-Learning - Microsoft Internet Explorer

Step 1 - Clicking on a study opens the Study Workspace.



The screenshot shows a Microsoft Internet Explorer browser window titled "Effects of e-Learning - Microsoft Internet Explorer". The address bar shows the URL: <http://irbdev/sandbox/Rooms/DisplayPages/Layout/>. The page header features the OHSU eIRB logo and the user name "Michael Miller | My Home | Logoff".

The main content area displays the study details for "Effects of e-Learning". A yellow box highlights the instruction: "Once you open an IRB study, you enter your Study Workspace." Below this, the IRB Number is displayed as **IRB00000063**. A red box highlights the text: "Click [Here](#) to continue." Below this, a navigation bar shows the current status: **Pre-submission** (highlighted in red), IRB Screening, Board Review, and Approved.

The study details are organized into several sections:

- Long Study Title:** Study the effects of e-Learning on research staff. **Review Category:**
- Sponsor:** NIH. **Study Status:** Researcher preparation
- Short Study Title:** Effects of e-Learning. **Expiration Date:**
- Principal Investigator:** Michael Miller. **Old IRB #:**
- Board Number:**

At the bottom of the study details, there are two tabs: "Initial Review History" and "Study Documents". Below these is a "Project Log" section.

The left sidebar contains navigation options:

- [Open IRQ](#)
- Quick Views**
  - [Additional Compliance Approval Status](#)
- Available Actions**
  - [Withdraw](#)
  - [Submit Your Study](#)
  - [Add or Edit Documents](#)
  - [Update Edit or Read Rights](#)

### Notes:

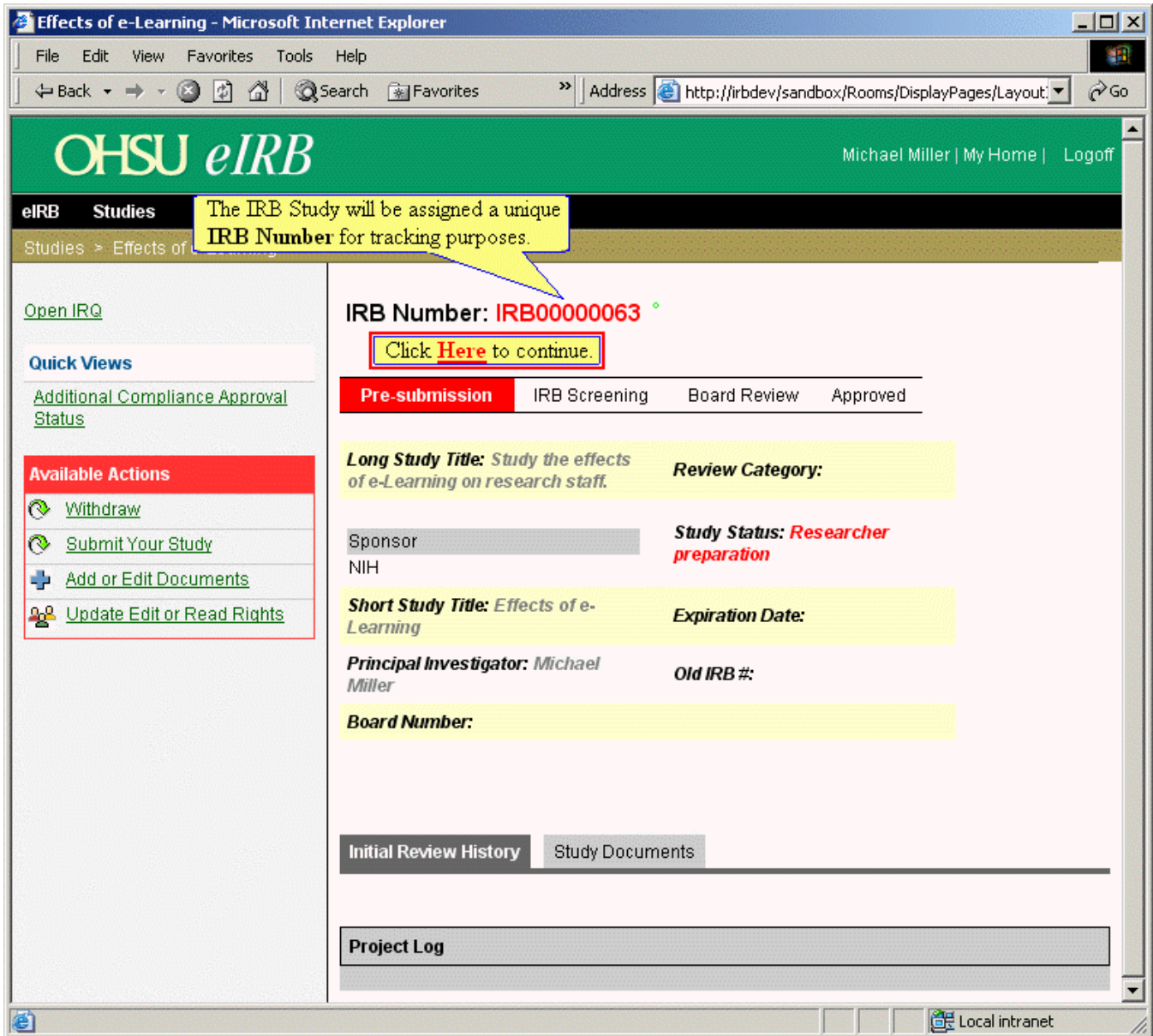
Once you open an IRB study, you enter your Study Workspace.

Click Here to continue.



### Effects of e-Learning - Microsoft Internet Explorer

Step 2 - Each study receives a unique IRB tracking number.



**Notes:**

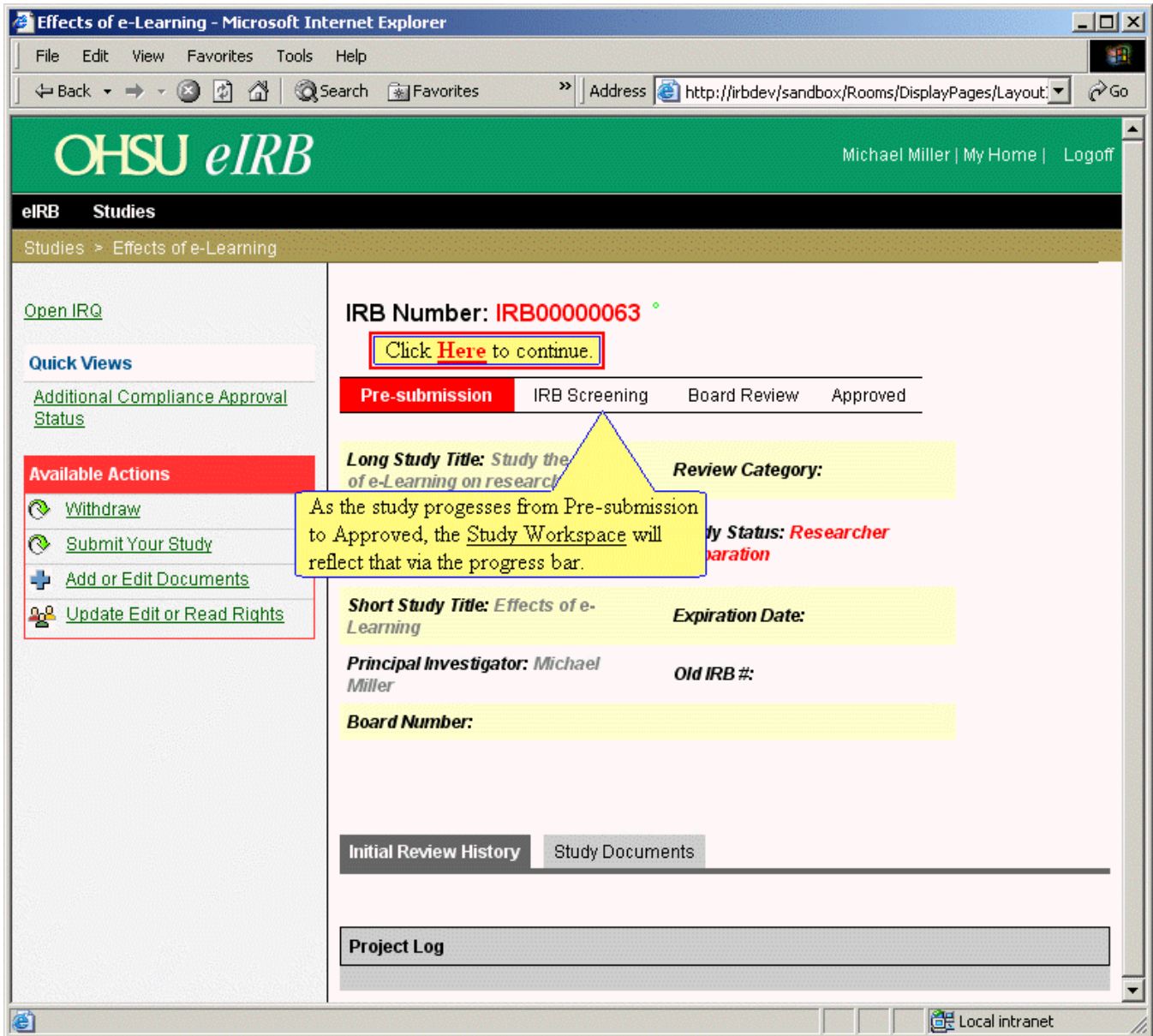
The IRB Study will be assigned a unique IRB Number for tracking purposes.

Click Here to continue.



**Effects of e-Learning - Microsoft Internet Explorer**

Step 3 - Progress is displayed via the progress bar.



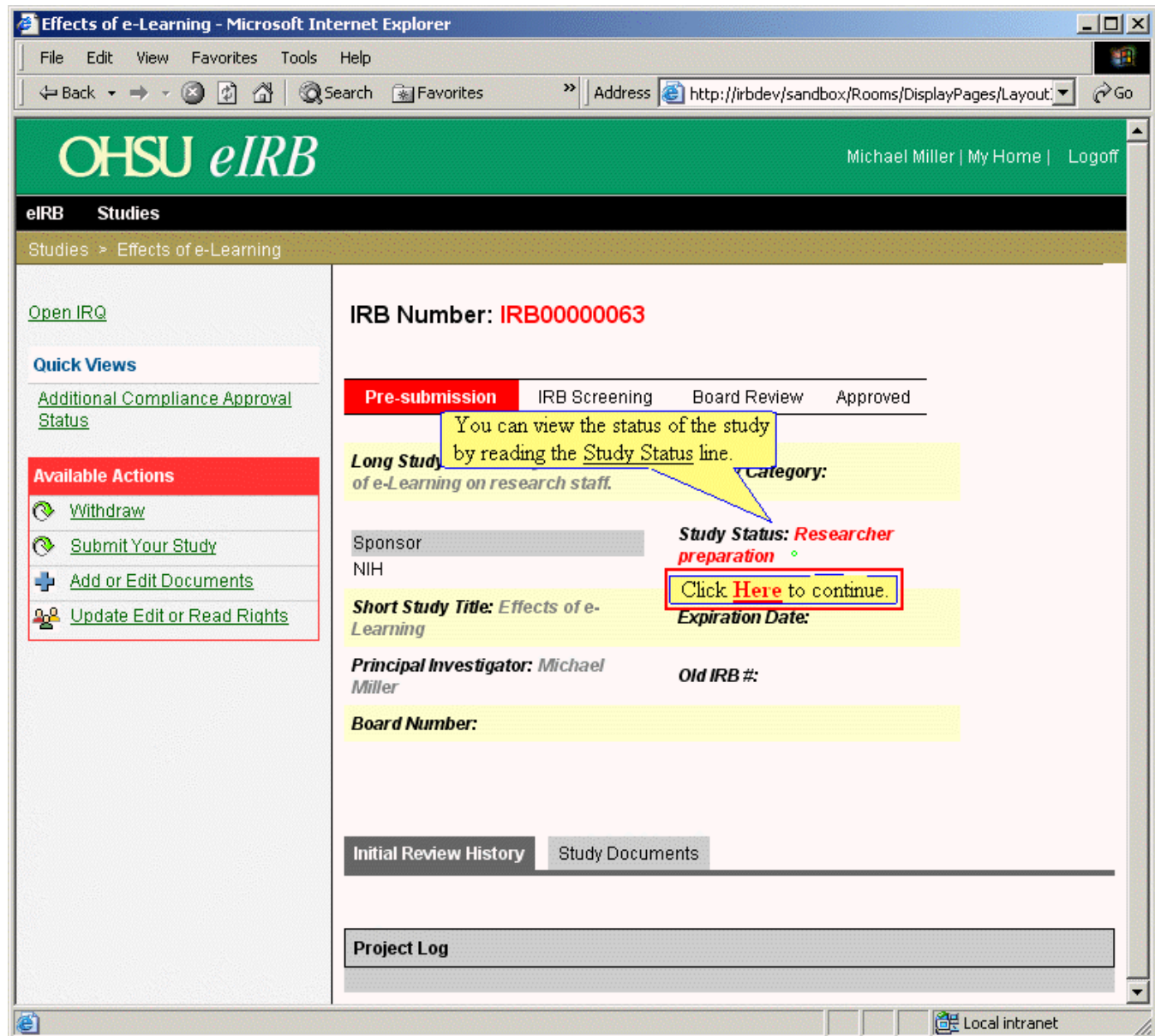
**Notes:**

As the study progresses from Pre-submission to Approved, the Study Workspace will reflect that via the progress bar.

Click Here to continue.

## Effects of e-Learning - Microsoft Internet Explorer

Step 4 - You can check the Study Status by checking the corresponding field.



Effects of e-Learning - Microsoft Internet Explorer

File Edit View Favorites Tools Help

Back Forward Stop Home Search Favorites Address http://irbdev/sandbox/Rooms/DisplayPages/Layout/ Go

OHSU eIRB Michael Miller | My Home | Logoff

eIRB Studies

Studies > Effects of e-Learning

Open IRQ

Quick Views

[Additional Compliance Approval Status](#)

Available Actions

- [Withdraw](#)
- [Submit Your Study](#)
- [Add or Edit Documents](#)
- [Update Edit or Read Rights](#)

IRB Number: **IRB00000063**

Pre-submission IRB Screening Board Review Approved

You can view the status of the study by reading the Study Status line.

Long Study of e-Learning on research staff. Category:

Sponsor NIH

Study Status: **Researcher preparation**

Click Here to continue.

Short Study Title: Effects of e-Learning

Principal Investigator: Michael Miller

Old IRB #:

Board Number:

Initial Review History Study Documents

Project Log

Local intranet

### Notes:

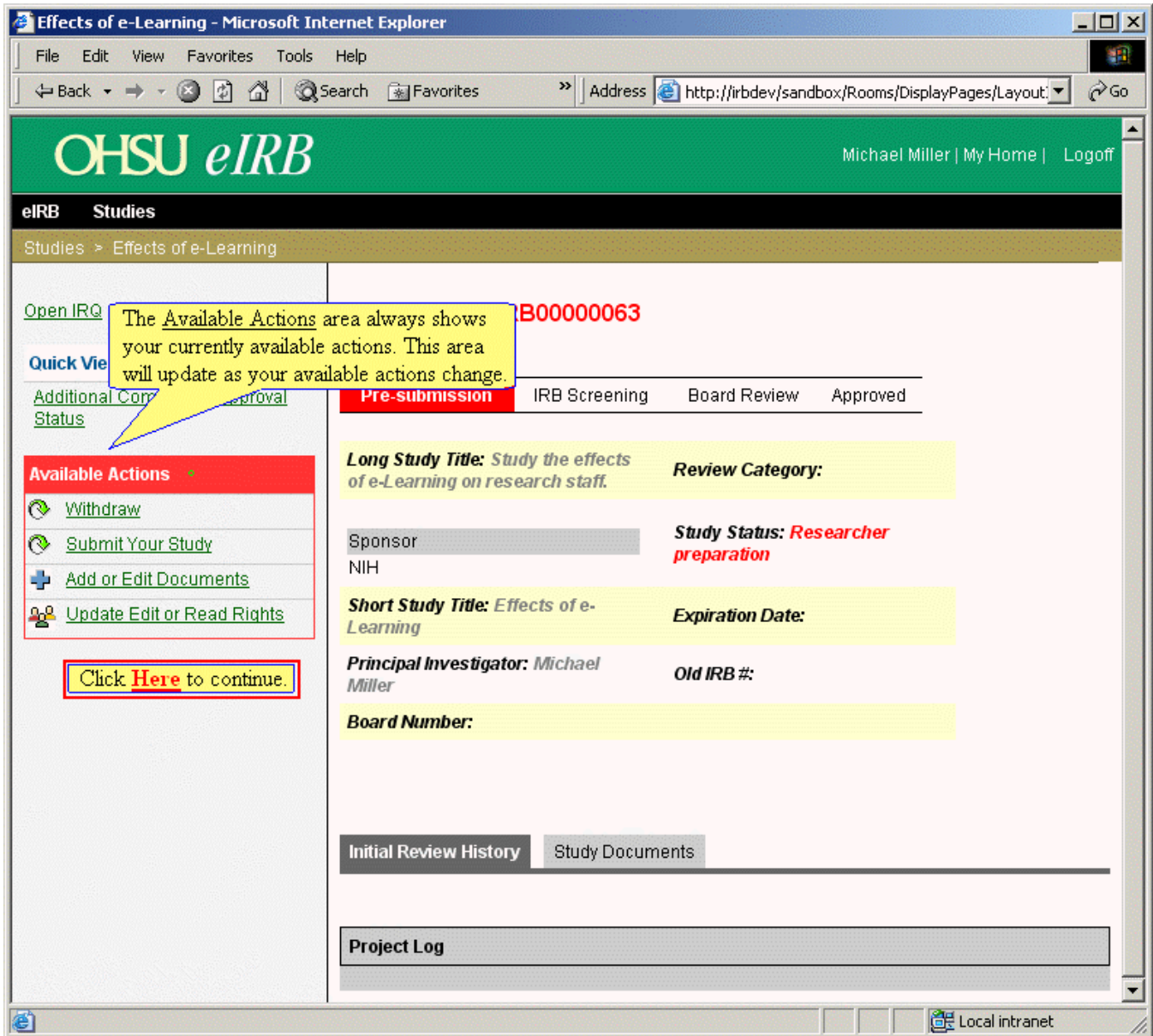
You can view the status of the study by reading the Study Status line.

Click Here to continue.



**Effects of e-Learning - Microsoft Internet Explorer**

Step 5 - The Available Actions area shows what actions you can take.



**Notes:**

The Available Actions area always shows your currently available actions. This area will update as your available actions change.

Click Here to continue.



Step 6 - End of simulation

Effects of e-Learning - Microsoft Internet Explorer

File Edit View Favorites Tools Help

Back Forward Stop Home Search Favorites Address http://irbdev/sandbox/Rooms/DisplayPages/Layout/ Go

**OHSU eIRB** Michael Miller | My Home | Logoff

eIRB Studies

Studies > Effects of e-Learning

[Open IRQ](#)

**Quick Views**

[Additional Compliance Approval Status](#)

**Available Actions**

- [Withdraw](#)
- [Submit Your Study](#)
- [Add or Edit Documents](#)
- [Update Edit or Read Rights](#)

**IRB Number: IRB00000063**

**Pre-submission** IRB Screening Board Review Approved

**Long Study Title:** Study the effects of e-Learning on research staff. **Review Category:**

**Sponsor:** NIH **Study Status:** Researcher preparation

**Short Study Title:** Effects of e-Learning **Expiration Date:**

**Principal Investigator:** Michael Miller **Old IRB #:**

**Board Number:**

Initial Review History Study Documents

Project Log

Local intranet