



# Biking OHSU

Spring 2010

Spring is when some wipe the mud off their bike frames, some pull their trusty ride out of storage, and some take that careful first ride. Spring is also when the OHSU biking experience will be sprouting a few changes.

## In this issue

- Tram Down: May 25<sup>th</sup> to 31<sup>st</sup>
- Seasonal Roundup
- Alternate Punch Card Locations
- Parking Tip
- Bike Banks
- Online Incentive Program
- 3-D Bike Maps

## TRAM DOWN MAY 25<sup>TH</sup> TO MAY 31<sup>ST</sup>

The Aerial Tram will be down for scheduled maintenance beginning Tuesday, May 25<sup>th</sup>. OHSU will be running free shuttles outfitted with bike racks. Please keep in mind that the tram averages about six bicycles per ride in the morning. A primer on using front-mount racks can be found at [trimet.org/tv/episode24](http://trimet.org/tv/episode24).



If you plan to bike to the South Waterfront and shuttle up the hill, plan to add 30 minutes to your commute and longer if the shuttle racks are at capacity. This might be a good time to get access to the CHH bike cages. More about the tram maintenance at [ohsu.edu/parking](http://ohsu.edu/parking) under "[Join the Discussion](#)" (login required). Start training now for that uphill ride.

## Seasonal Roundup

- ✓ Bike-related thefts\*: 5
- ✓ Bicycle Workshops: 2
- ✓ Flats Repaired: 23
- ✓ Bike Questions at Our Earth Week Booth: countless
- ✓ New registrants to Commuter All Star Program since January: 279

\*as reported to Public Safety or City on or near OHSU property.

For more information about bicycling and OHSU visit [www.ohsu.edu/bike](http://www.ohsu.edu/bike) or contact us at [bike@ohsu.edu](mailto:bike@ohsu.edu).

## Alternate Punch Card Locations for Tram Riders

SW Whitaker & SW Moody  
(temporary shuttle stop)  
5:30am to 6pm

Marquam Hill Information Center  
5:30am to 3pm

CHH Parking Garage Booth  
7am to 9:30am

Transportation Customer Service  
7am to 5pm  
(closed Friday, 2:30pm to 3:30pm)

Parking Booths  
at Casey Eye Institute  
& across from the ED  
7:30am to 4pm



## Staple Rack Parking Tip

Usually, it makes sense to park lengthwise so two bikes can fit on the rack. This helps keep from impeding narrow sidewalks.



But when parking's tight, and the sidewalk isn't, parking three bikes to one rack is a great strategy. This is how we recommend parking at the Center for Health & Healing.

## Where do you want your bike banks?

We're scouting locations for bike banks now in storage. Some like the added security of bike banks, while others prefer the ease and speed of staple racks. We want to place the banks wherever they'll get the most use—if that sounds like your worksite, [chime in!](#)

Bike banks: less likely to fail than some other banks you may have heard of.



For more information about bicycling and OHSU visit [www.ohsu.edu/bike](http://www.ohsu.edu/bike) or contact us at [bike@ohsu.edu](mailto:bike@ohsu.edu).

In 2010, the OHSU bike program boldly steps into...

THE FUTURE THE FUTURE THE FUTURE

## Incentive Program Goes Online



Before the end of 2010, the Commuter All Star program will make the transition from punch cards to an online system.



Biking in the digital age, as demonstrated by Atari's 1984 classic "Paperboy".

The goals of the transition:

- Standardize access to incentives across all OHSU work sites.
- Ease process for bicyclists & administrators.
- Improve communication between bicyclists & OHSU.

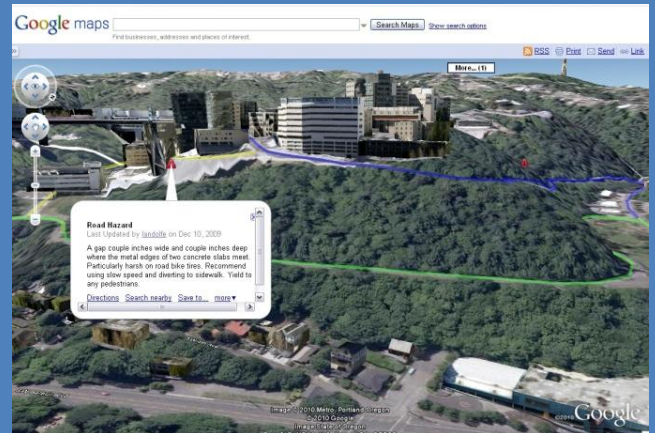
Stay tuned to the Bicycling OHSU newsletter and Staff News as the project develops. We're still a few months away from launch. Meanwhile, below are some great local sites to check out.

[rideoregonride.com](http://rideoregonride.com)   [oregonmetro.gov/bike](http://oregonmetro.gov/bike)   [shift2bikes.org](http://shift2bikes.org)   [bikecommutechallenge.com](http://bikecommutechallenge.com)  
[bikeportland.org](http://bikeportland.org)   [portlandonline.com/transportation](http://portlandonline.com/transportation)   [cycleoregon.com](http://cycleoregon.com)

## 3-D Bike Maps

Google may be our future overlords, but they just beefed up [maps.google.com](http://maps.google.com) with two great features, "Bicycling" and "Earth". The two features can't be used yet at the same time, but *OHSU bike maps will work with either.*

Bike Routes to Marquam Hill & South Waterfront can be found at [ohsu.edu/bike](http://ohsu.edu/bike) or via this [link](#). You have two ways to view your bike route in Google.



Bicycling Mode: Float your cursor over the "More" tab and check "Bicycling". Maps, directions & commute time are now tailored to bicycling!

Earth Mode: Click the "Earth" tab. Click it and your commute can now be seen with 3D topography and buildings! Pretty helpful, given Marquam Hill's, umm, dynamic topography.

## OHSU Transportation & Parking

Mail code: PP22A

3310 SW US Veterans Hospital Rd.

Portland, OR 97239

503-494-8283

Mon-Fri, 7 a.m. – 5 p.m. (closed Friday 2:30–3:30 p.m.)

For more information about bicycling and OHSU visit [www.ohsu.edu/bike](http://www.ohsu.edu/bike) or contact us at [bike@ohsu.edu](mailto:bike@ohsu.edu).