

Inclusive Child Care

Celebrating Oregon's
Communities:
Supporting Children and
Families

April 4, 2008



Objectives

1. Examine value of inclusive child care.
2. Gain information on resources that support inclusion in child care.
3. Share strategies for parent and provider partnerships with health, mental health and other resources.





Child Care in Oregon

- **Family Child Care**
- **Certified Family Homes**
- **Child Care Centers**
- Preschools
- Before and After School Programs
- Parks and Recreation
- Family and Friends



Inclusion as a value

- Inclusion, as a value, supports the right of all children , regardless of their diverse abilities to participate actively in natural settings within their communities.

– Division for Early Childhood Position Statement on Inclusion

More alike than different



All Children:

- Are curious learners
- Want friends and peers
- Want to share fun, smiles, laughter, tears and comfort
- Have unique, individual ways of learning and doing
- Are dependent upon social interactions for optimum development
- Benefit from being with an array of adults and children
- Have more potential than we can ever know.

Inclusive Child Care: What it looks like



- Children with an array of abilities and needs
- Children and parents feel welcome
- Every child is treated as a unique individual
- Everybody participates
- All staff are with all children
- Provider has support when it's needed
- A team effort
- Creative solutions
- Open to on-site services



Benefits to children:

- High levels of social interaction with peers (Brennen, et. al.)
- Improved social competence, communication skills, and other developmental skills (Brennen, et. al.)
- Less likely to be stigmatized (Wolery)

Issues for Parents



- ✓ SAFETY!!
- ✓ Will the child have appropriate supports in place?
- ✓ Will the environment and activities allow the child to be successful?
- ✓ Will the participation be meaningful?
- ✓ Field trips: are they too scary to consider?
- ✓ Did I make the right decision?

COMMON BARRIERS



- Fear of the unknown
- Attitudes (providers, parents and professionals)
- Lack of individualized supports
- Toileting
- Behavior
- Accessibility
- Cost

A Caring Community: Quality child care for ALL children



- ***Finding care***
- ***Provider training***
- ***Individualized supports***
- ***Financial assistance***
- ***Community collaboration***
- ***Awareness and Commitment***

ADA = Americans with Disabilities Act



- Civil rights law
- Applies to children and parents
- Reasonable accommodation
- Can't charge more because a child has a disability
- An opportunity to look at each person as an *individual*

Oregon Rules for Child Care Centers and Certified Family Child Care Providers



- ...shall not discriminate against any child on the basis of race, religion..., or because of a need for special care.
- ...decision to enroll/not enroll a child shall be made on an individual basis after the child's child care needs have been assessed using information from parents and professionals who are knowledgeable about the specific disability.
- ..., such a plan shall be developed in writing...

Roles of health, mental health, and other service providers...



- Consultation
- Training
- Integration with treatment plans
- Wraparound/System of care plans
- Transition
- Respite care

OREGON RESOURCES



- Child Care Resource and Referral
- Child Care Health Consultation Projects
- CaCoon
- Early Intervention/Early Childhood Special Education
- Mental health consultation
- Lifespan Respite Care Programs

The Inclusive Child Care Program



Inclusive Child Care Program Services:



- Supplemental subsidy
- Individualized plan and coordination
- Consultation
- Training



Individualized Child Care Subsidy

Supplemental subsidies through:

- Child Care Division: Targeted Populations
- Department of Human Services: Employment Related Day Care



Inclusive Child Care Program: Individualized subsidy

- **Parents are employed, students, or in job-training activities**
- **85% median income (\$4,388/family of 4)**
- **Child requires accommodations, supports, high level of care and supervision**



Inclusive Child Care Program: Individualized subsidy

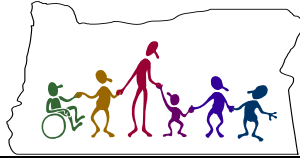
- **Individual assessment (accommodations? supports? higher levels of care and supervision?)**
- **Individual plan**
- **Coordination with other supports**



Other Inclusive Child Care Program activities

- **PICCE Project (Partnerships for Inclusive Child Care and Education)**
- **Inclusive Child Care Inventory**
- **Opening Doors**
- **Packet Project**

The Inclusive Child Care Program



Portland Metro: (971) 673-2977
1-866-837-0250
terry.butler@state.or.us
inclusivecc@oregonchildcare.org

