

BIOTERRORISM: What You Need to Know” is a syndromic-based continuing medical education program designed for primary care physicians and other health care providers.

The program can be completed at no cost via the WEB or by ordering the CD of the program. The WEB and CD includes audio and video, and all programs include text documents, slide presentation, quizzes, and learning exercises.

The program introduction discusses what bioterrorism is, what biological agents are, how to recognize a bioterrorism event, and how to report suspected cases.

Before beginning the course, you take a pretest. After the pretest, you may review and complete each module at your pace. Each module finishes with a learning exercise consisting of a case presentation and questions.

At the completion of all modules, you will be required to take a posttest.

www.ahecbt.org

WWAMI (Idaho) Office for Clinical Medical Education
777 North Raymond St.
Boise, Idaho 83704
208-327-0641
Fax 208-327-0684



A CONTINUING MEDICAL EDUCATION COURSE FOR PRIMARY CARE PHYSICIANS AND OTHER HEALTH CARE PROVIDERS

Bioterrorism

“what you need to know”



www.ahecbt.org

- WEB Based
- CD Based

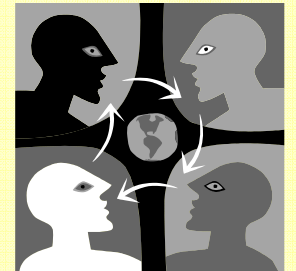
University of Washington
School of Medicine

WWAMI Area Health
Education Centers

WWAMI (Idaho) Office for
Clinical Medical Education

WWAMI Regional Center of
Excellence for Biodefense
and Emerging Infectious
Diseases

No Registration Fee



This activity has been reviewed and is acceptable for up to **6.5 Prescribed credits** by the American Academy of Family Physicians. Term of approval is from 2/18/2005, with option for yearly renewal.

Why Bioterrorism?

Public health officials are **more alarmed than they have signaled publicly**, that we are **woefully unprepared** for a bioterrorist attack.

Hospitals and public health agencies would be **overwhelmed** trying to respond.

Lack of new vaccines, medications, and **lack of new technology** to detect an attack are of **major concern**.

Physicians are **not sufficiently prepared** to recognize a single case or a group of cases as the beginnings of a much larger bioterrorism event.

Those with symptoms seek medical attention from their **primary care physicians**, urgent care providers, and hospital emergency departments. First cases may **not be diagnosed** as an unnaturally occurring event.

Family physicians must maintain a **high index of suspicion** and provide high-quality primary care as our best line of defense against biological terrorism.

September 2005

Family physicians must **recognize** indications of a terrorist event, **meet** the patient's acute care needs, **participate** in a coordinated, multidisciplinary response to terrorist event and must rapidly and effectively **alert** the public health system of such an event.

Course Objectives

- Identify the six (6) CDC bioterrorism agents of most concern.
- Describe four (4) common syndromic presentations of bioterrorist agents.
- Describe the prevention and initial management of exposed patients, including isolation and list the mechanisms for event reporting and resource utilization.

WEB-Based Instructions

Visit www.ahecbt.org. Register and log in. You must complete the pretest in its entirety, but once this has been completed, you may log in and out to complete the course at your leisure.

CD Orders

Contact: WWAMI (Idaho) Office for Clinical Medical Education, 777 N Raymond St, Boise, ID 83704, phone: 208-327-0641 fax: 208-327-0684 e-mail: danae@u.washington.edu



James R. Blackman, M.D.
Assistant Dean, Idaho WWAMI
University of Washington SOM



S. R. Blue, M.D.
Medical Director, HIV Clinic
Family Medicine Residency of ID

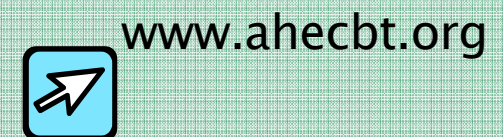


Ted Epperly, M.D.
Program Director/Chairman
Family Medicine Residency of ID



Chris Hahn, M.D.
State Epidemiologist
Idaho

There is no registration fee to take this course. This course is designed, written, and presented by Idaho physicians.



WWAMI (Idaho) Office for Clinical Medical
Education
777 North Raymond St, Boise, Idaho 83704
208-327-0641 Fax 208-327-0684
danae@u.washington.edu