

## Human Investigations Program ⓘ

### Academic Courses in Translational Research

HIP was established in 2001 to create a unified, campus-wide resource for clinical and translational research education. The program is based on nationally-recognized competencies for clinical and translational research, and operates on a policy of inclusion – the basic qualification is any doctoral degree or enrollment in a doctoral program.

- HIP offers a Master of Clinical Research degree (45 hours) and a Certificate in Human Investigations (26 hours). OHSU faculty members and post-doctoral students/fellows can enroll in individual courses (non-degree track).
- Over **500** students, faculty, and fellows have enrolled; more than **100** have received the certificate and **over 50** have completed the MCR program.

## HIP Buffet Series ⓘ

### Regular Forums on a Wide Range of Translational Research Topics

This series provides a skill-based forum for faculty, staff, and students to explore practical research topics. The lunch-time seminars are held twice a month. Topics include:

- Applying for Career Development Awards
- Biolibraries at OHSU
- Refresher on Power & Sample Size
- Working with Industry in Research

## Institutional K Awards

### Mentored Awards for Early-Career Researchers

Four institutional K12 programs award salary support to early-career faculty who are developing research careers. These awards support training in translational research across the spectrum of biomedical investigation – from bench science to outcomes and comparative effectiveness. Programs include: OCTRI KL2 ⓘ, BIRCSW (Women's Health) ⓘ, Child Health, and Comparative Effectiveness K12.

## OCTRI Scholars Program ⓘ

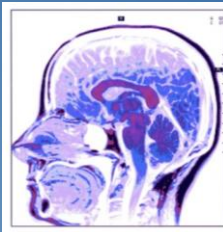
### Unifying Career Development Awardees across OHSU and the VA

Everyone who receives a clinician scientist career development award (e.g. NIH K series) is invited to participate, and faculty or fellows who are applying for an award may request to participate. Interests span the translational spectrum, from basic science to health services and policy.

- Informal, monthly meetings provide a forum for content that may fall outside the mentor-mentee relationship.
- Design Studio, a forum to present proposed or newly funded research for feedback from an audience of senior investigators. Proposed career development research or other grant proposals are welcome.
- Limited in-kind support from OCTRI for research services like biostatistics, nursing, lab, IRB, recruitment, etc.
- Focused electronic learning community to improve mentorship.

### Masters in Clinical Research

- A mentored research training opportunity.
- Open to graduate students, post-docs, and faculty from clinical and basic science departments.
- Participants develop expertise in human investigation with an emphasis on techniques and practical skills of translation.
- Program is tailored to the student. Lab-based graduate students can focus on T1 research techniques and a clinician investigator can choose a concentration in population science.



*My participation in the HIP program was one of the highlights of my academic experience. It provided me with fundamental skills that I have used and will continue to use in the pursuit of scientific questions, and it also gave me a much larger view of the different types of research occurring at OHSU. Invaluable tools as I prepare to defend my thesis and move into the next phase of my career.*

Wilmon Grant, MCR  
PhD Candidate in Neuroscience

### Career Development Awards

- K01 K02 K07 K08 K22 K23 K25 K99/R00 (NIH or AHRQ)
- Participants in KL2 or K12 programs
- Similar awards from RWJ, American Heart Association, etc.

### OHSU at a Glance

- In 2005, OHSU faculty had held 26 mentored awards.
- As of 2010, OHSU faculty had held 102 mentored awards. 42% of these faculty have participated in HIP.

# EDUCATING TRANSLATIONAL RESEARCHERS AT OHSU

## Graduate Certificate in Biostatistics ⓘ

*Opportunity to Focus on Biostatistical Methodology*

The Department of Public Health and Preventive Medicine offers a Graduate Certificate in Biostatistics (30 credits), which provides basic and intermediate graduate-level biostatistics training for a diverse range of researchers. Biostatistics methods for both basic and clinical science are available, and some courses can be taken without joining the program.

## OSLER TL1 Program ⓘ

*Mentored Translational Research Experience for Doctoral Students*



The Oregon Students Learn and Experience Research (OSLER) program offers stipends for students enrolled in any doctoral program (MD, PhD, DNP, DMD, PharmD) to participate in translational research

projects under the guidance of a faculty mentor. OSLER trainees can enroll in short-term (10-12 weeks) or year-long projects. The intent is to complement the doctoral curriculum with additional experience in translational research. The OSLER program is also an important opportunity for faculty to provide mentoring related to research.

Since 2007, more than 50 doctoral students have participated in mentored research project through OSLER. Trainees range from MD students, including participants in the MD/MPH program, to DMD students and PhD candidates from biomedical engineering, neuroscience, and molecular and medical genetics.



*Dr. Melanie Gillingham works with MD and PhD students on a research project looking into the effects of glucose.*

*Photo courtesy of OCTRI*

## Support for OHSU Researchers Exploring Translational Research

Funding Focus ⓘ	Open to all	This brown-bag lunchtime series provides advice from the OHSU research community and beyond on the important topic of funding your research.
Vollum Writing Program ⓘ	Open to all; registration and small fee	The Vollum Writing Course is an in-depth, 8-week professional science writing course open to all OHSU researchers.
Specific Aims Workshop ⓘ	Open to all	The objective of this workshop is to teach you how to write a concise, well-crafted specific aims page for an upcoming grant.
HIP Buffet Series ⓘ	Open to all	The HIP Buffet Series provides a forum in which students can learn about various topics in clinical and translational research.
Clinical Research Coordinator Training ⓘ	Open to all, registration and small fee	Training opportunities for study coordinators and clinical researchers. Focus is navigating research requirements at OHSU. Includes 2-day workshop and series of ongoing sessions.
Biostatistics Drop-In Sessions ⓘ	Open to all	During these weekly drop-in sessions, OCTRI biostatisticians provide basic statistical advice and answer specific questions about SAS and SPSS.
Career & Mentoring Series ⓘ (OHSU Mentoring Program)	Open to all	This series is designed to help individuals get career development assistance. Participation will help faculty gain baseline competencies and an essential understanding of how to succeed at OHSU. Not specific to research.
OCTRI Design Studio ⓘ	Limited to career development awardees	Design Studios aim to maximize the success of OHSU's early-career investigators by giving them feedback as they prepare grant proposals. They present their plan and get feedback from mentors, senior investigators, biostatisticians, and regulatory experts.
Pilot Funding	Competitive application	OCTRI offers annual pilot funding, including targeted areas in proteomics, biostatistics, and ONPRC. Internal pilot funding is also available from ORCATCH, Alzheimer Disease Center, the Knight, PNWRCE, Portland Alcohol Research Center, Methamphetamine Abuse Research Center, MRF, VGTI, and Neuroscience Translational Research Program.
Strategic Investments	By application	Limited funding available from OCTRI for specific efforts related to preliminary data generation for program projects or other ground-breaking opportunities.

# THE NATIONAL LANDSCAPE OF C+T RESEARCH EDUCATION

Nationally, the CTSA initiative catalyzed an unprecedented level of collaboration among professional organizations, academic health centers, and NIH to address the need for robust and consistent education that a) provides basic skills in clinical and translational research and b) prepares investigators for the unique challenges and opportunities of translational research and team science.

## CTSA Clinical & Translational Science Awards<sup>®</sup>

- Currently 55 academic health centers across the US.
- OHSU was one of the first 12 CTSA's awarded in 2006.

### Strategic Goals

- Goal 1: Build national clinical and translational research capability.
- **Goal 2: Provide training and improve career development of clinical and translational scientists.**
- Goal 3: Enhance consortiumwide collaborations.
- Goal 4: Improve the health of our communities and the nation.
- Goal 5: Advance T1 translational research to move basic laboratory discoveries and knowledge into clinical testing.

### Core Competencies

The CTSA consortium has identified core competencies for master's degrees in C+T research. There are 14 thematic areas.

- [View the core competencies.](#)

## National Organizations and Joint Meeting

As 2009-2010 president of the Association of Clinical Research Training (ACRT), Dr. Cindy Morris from OHSU formed an alliance with Dr. Barry Collier (The Rockefeller University) and the newly formed Society for Clinical and Translational Science (SCTS). Together, the ACRT and SCTS sponsored the largest meeting in clinical and translational medicine held to date with more than 800 attendees, including 275 KL2 trainees and scholars. The 2011 meeting has added another official sponsor, the American Federation for Medical Research (AFMR).

The **annual Clinical & Translational Research and Education Meeting** ⓘ brings together trainees, educators, and all others engaged in clinical and translational science. The meeting focuses on educational sessions designed to provide information on the latest developments in the techniques and processes vital for the successful conduct of clinical and translational science. There are also plenary sessions in which leaders from government, industry, academia, and philanthropy provide their perspectives on the state of the discipline and its future direction.

- OHSU is a member of ACRT and SCTS so all faculty are encouraged to utilize their resources.



## Opportunities with Journals

Drs. Cindy Morris and Fred Meyers of UC Davis have worked with the editors of *Science: Translational Medicine* ⓘ to select Associate Scientific Advisors from KL2 scholars nationwide to review the current literature to provide summaries of innovative research. The first group of 12 KL2 scholars was selected in 2010, including Dr. Joshi Alumkal, MD, an assistant professor of medicine at OHSU. Melissa Nyendak, MD, assistant professor of medicine, was recently selected to serve as an advisor in 2011.

## National Online Resource

CTSciNet ⓘ, the Clinical and Translational Science Network, is a product of successful partnering among *Science*, the American Association for the Advancement of Science, and a long list of other contributors, including the CTSA consortium. CTSciNet is an online community for people interested in or already pursuing careers in clinical and translational research.



- Network and have discussions with other scientists, including peers, mentors, and protégées.
- Join virtual groups on specific subjects or for specific organizations.
- Read articles and find specific information on navigating a career in clinical or translational research.