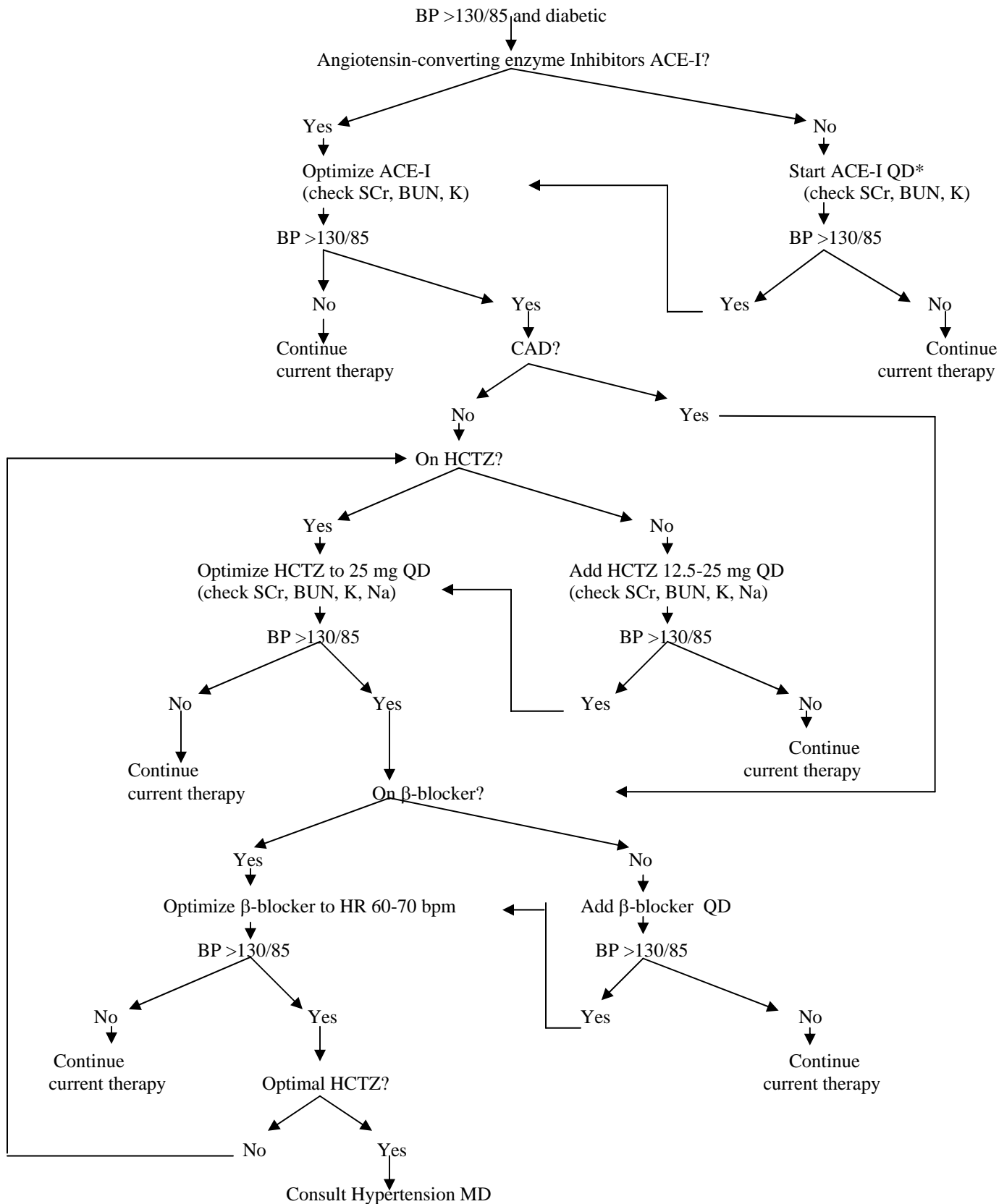


Hypertension Algorithm in Diabetic Patients



- After initiation of antihypertensive and each dosage adjustment, check BP within 2-3 weeks
- All pregnant patients will be excluded from the use of this algorithm
- * If patient does not tolerate ACE-inhibitor due to cough, start angiotensin II blocker and titrate in a similar fashion as above to a maximum of ARB

