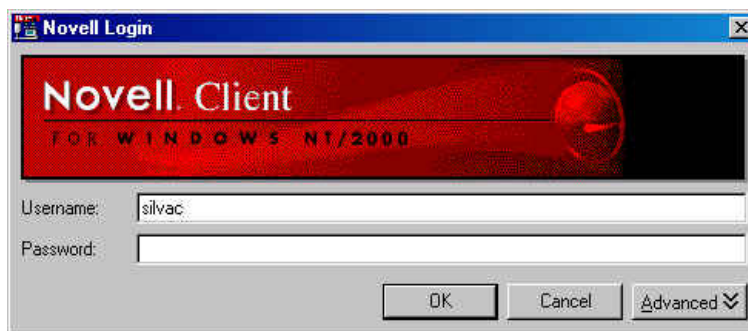


! Novell Network Login

Name (a.k.a. User ID, User Name, Login Name, Login ID): Assigned when users NCO4 form is processed.

Generally a combination of your last name and first name initial(s).

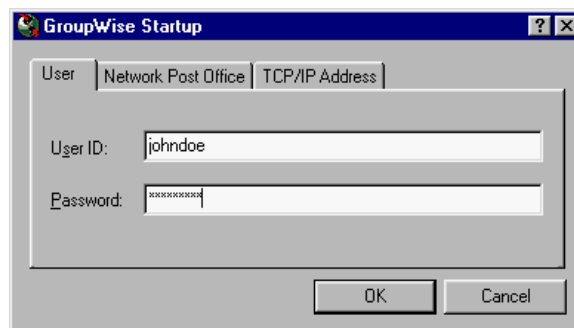
Password: Assigned when network account is set up. This password requires changing every six months. Not case sensitive.



! GroupWise E-mail Login

User ID (a.k.a. Name, User Name, Login ID, Login Name): This is the same as the Novell Login Name (above)

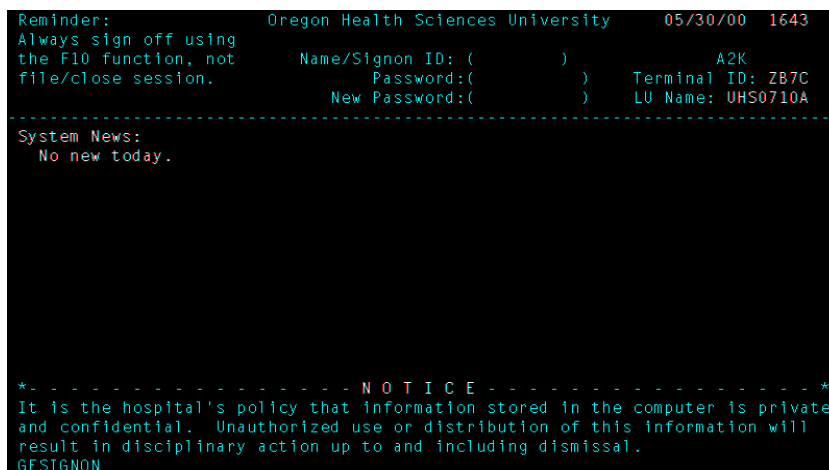
Password: Assigned as first 6 digits of your Social Security Number. This is a temporary password and must be changed. Password IS case sensitive.



! LCR Logon

Name/Sign-on ID (a.k.a. User ID, User Name): This ID is assigned when your account is created. Generally the ID is a combination of the users initials and a number (e.g. FDR7).

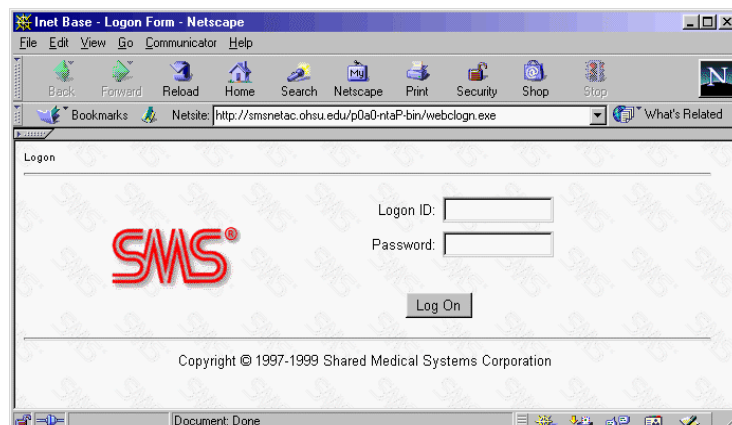
Password: This is assigned when the account is set up. You are prompted to change this password when you first login.



! LCRWeb

Login ID: Same as LCR Logon above

Password: Same as LCR Logon above
Note: SMS (Shared Medical Systems) is the company that makes the A2K (Action 2000) application. LCR is one portion of that application.



! Ovid Logon

No ID/password required unless you want to save your search strategy. If so, you need an Individual Ovid account. Sign up at: <http://www.ohsu.edu/library/ovidsignup.shtml>

ID: alphanumeric beginning with oh.

Password: You choose when you sign up for an account

OVID Welcome to Ovid ? Help

To start a session with Ovid:

- Enter your user ID and password below
- Choose a user mode (Basic or Advanced)
- Click the "Start Ovid" button

ID Password

Mode: Basic
 Advanced

If you wish to bookmark this site, please do so at this page.

Copyright (c) 2000-2001 Ovid Technologies, Inc.

! Off-Campus Access Login

ID (a.k.a. User ID):
This is your last name.

Password: Your library barcode.
If you do not have a library barcode you may get one in the library or, for distance education students, at <https://www.ohsu.edu/library/libcdapp.shtml>

https://liboff.ohsu.edu/login/ - Microsoft Internet Explorer

File Edit View Favorites Tools Help

Address <https://liboff.ohsu.edu/login/> Go Links

Off-Campus Access to OHSU Library Resources

Log in below to access databases, electronic journals, and electronic books.

Last name

Library barcode number

Don't have a barcode?
Problems logging in?

NOTE: When you exit each resource, it will take you to its individual exit page. To find additional resources, return to the Library home page.

Internet

! PACS Login – Web based

User ID (a.k.a. Login ID, User Name):
This is the same as your Novell and GroupWise User ID.

Password: Assigned as the first 6 digits of your Social Security Number.
This password can be changed by calling the OHSU Help Desk at 494-2222.

Web1000 AGFA Agfa

User ID:

Password: