

Early Intervention Early Childhood Special Education

From Referral to Services

Presented by: Lori Kellogg, Coordinator
EI/ECSE, Northwest Regional Education Service District



EI/ECSE Discussion Points

- Program description
- Program goals
- Referral
- Process Flowchart
- Eligibility criteria
- Professionals involved
- How services are provided
- Where services are provided
- Community collaboration

Program Description

- EI- Early Intervention
 - Provides services to children birth through age 2 with developmental delays, or at risk
- ECSE – Early Childhood Special Education
 - Provides services to children ages 3 to 5 with developmental delays

Program Description

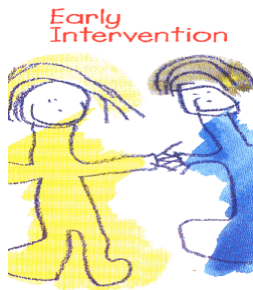
- Statutorily mandated by federal and state
- Provided at no cost for eligible students

Early Intervention Goals

- Provide parent training and coaching
- Assist in skill development
- Facilitate within routines and activities of everyday life

Early Childhood Special Ed Goals

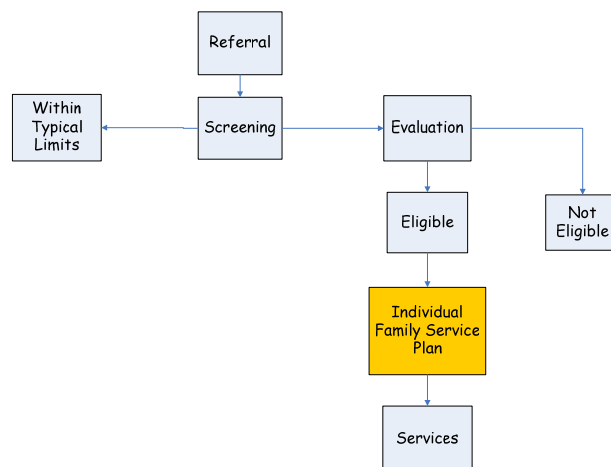
- Continuation of EI goals
- Promote educational skill development
- Least restrictive environment



Referrals

- **Anyone** can make a referral
- Call local county contact per the Do You Have Concerns brochure.

Referral/Eligibility Flowchart



EI Referral Sources

(birth through age 2)

- Parents, physicians, hospitals, clinics, Public Health, New Parent Network, anyone with a concern about a child's development

EI Referral Sources

- CAPTA – Child Abuse Prevention and Treatment Act
 - Requires developmental screening for every child, birth to age 3 with substantiated case of abuse or neglect
 - Federal requirement as of 2003

EI Referral Sources

- **EHDI** - Early Hearing Detection and Intervention
 - Mandates newborn hearing screening for infants born in hospitals with more than 200 births per year
 - Enrollment in EI programs if hearing loss is substantiated

EI Screening

- **Process – No medical diagnosis**
 - Screening typically at home visit
 - If developing typically per screening – no evaluation
 - If delays suspected, an evaluation appointment is scheduled

EI Evaluation

- **Process – Medical diagnosis** for a condition with established risk of developmental delay
 - Referral information indicates a significant medical condition
 - Medical records are requested to substantiate diagnosis
 - CBA – curriculum based assessment completed
 - It is not necessary to demonstrate delays

EI Evaluation

- Standardized assessment is utilized for determining skill level in each of the following domains:
 - Cognitive
 - Adaptive (self-help)
 - Gross motor
 - Fine motor
 - Social
 - Communication

EI Eligibility (birth to 2)

- Significant delay in one or more developmental area (1.5 standard deviations (SD) or more below the mean in two or more developmental areas, or 2.0 SD below the mean in one area)

OR

- Based on a physician's statement of physical or mental condition likely to result in developmental delays. Some of these conditions may be extreme prematurity of birth, genetic syndromes, significant vision, hearing, or motor impairments.

EI Eligibility

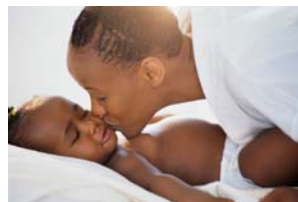
- If evaluation demonstrates significant delays
 - Meeting will be scheduled
 - Eligibility
 - IFSP developed based on child's needs and family's priorities and concerns
- If evaluation demonstrates typical development
 - Non-eligibility completed

EI Eligibility Categories

- Hearing Impairment
- Vision Impairment
- Deaf Blindness
- Orthopedic Impairment
- Autism Spectrum Disorder
- Physical or Mental Condition Likely to Result in Developmental Delay
- Developmental Delay

EI Services

- Parent coaching model
- Based on individual child's needs and family priorities
- Provided in natural environments
 - Home
 - Daycare
 - Places where typically developing children may be with parents/caregivers



EI Process Timeline

- EI referral to services
 - 45 calendar days



ECSE Referral (3 to 5 years of age)

- Re-evaluation - EI to ECSE
- Parents, preschools, daycares, physicians, Head Start, Public Health, others

ECSE Evaluation

- Conducted in areas of suspected delay
- Must provide adequate information to consider eligibility and, if eligible, develop IFSP

ECSE Eligibility

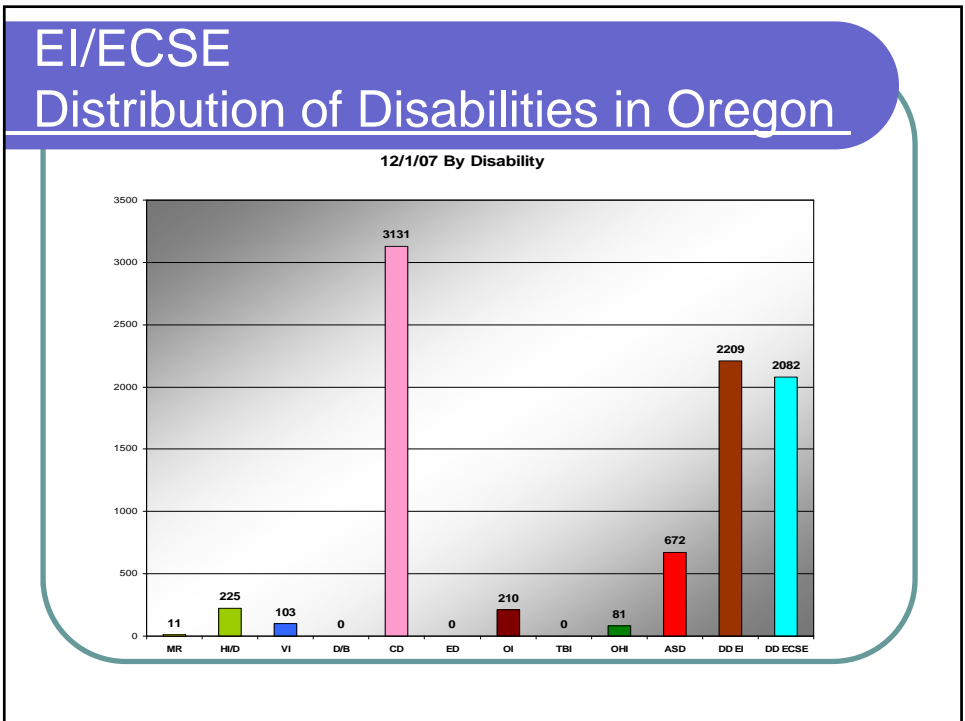
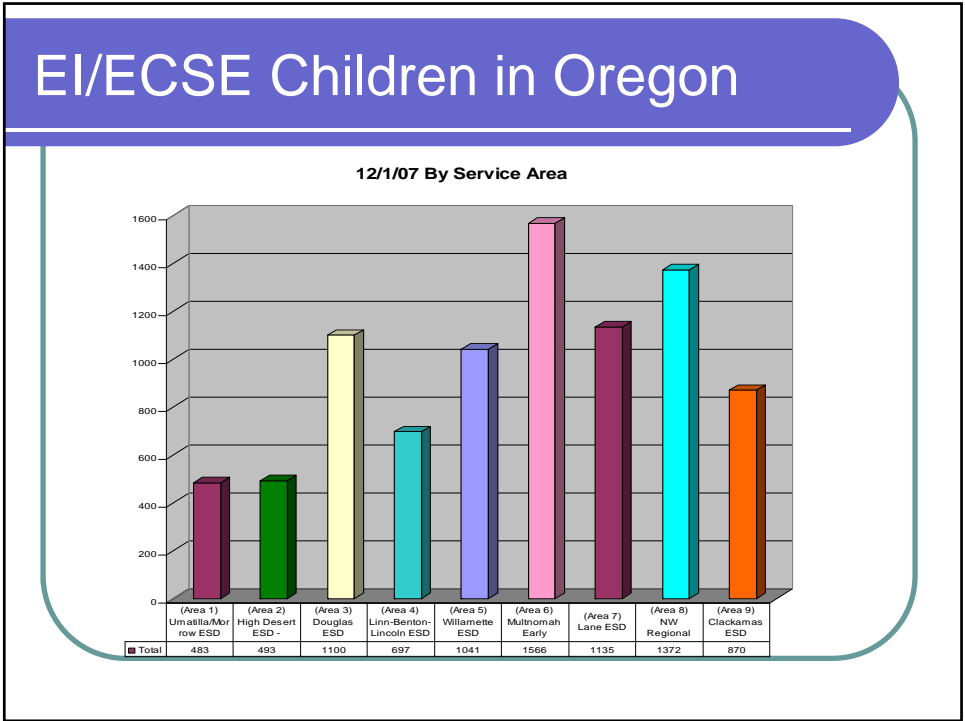
- Significant delay in one or more developmental areas
(1.5 standard deviations or more below the mean)
- Adverse impact on student's educational performance

ECSE Eligibility Categories

- Communication Disorder
- Emotional Disturbance
- Hearing Impairment
- Deaf Blindness
- Vision Impairment
- Orthopedic Impairment
- Autism Spectrum Disorder
- Other Health Impairment
- Traumatic Brain Injured
- Mental Retardation
- Specific Learning Disability
- Developmental Delay

ECSE Service

- Provided in least restrictive environment
- Based on child's individual needs
- Determined by the IFSP team



Professionals Involved

- Early Childhood Education Specialists (teacher)
- Speech/Language Pathologists
- Occupational Therapists
- Physical Therapists
- School Psychologists
- Autism Specialists
- Deaf/Hard of Hearing Specialist
- Vision Specialist
- Nurses
- Interpreters



How Services are Provided

- Home visits
- Parent trainings
- Parent/Toddler classes
- Community consultation
- Speech/Language classes
- 1:1 instruction
- Self-contained preschools
- Integrated Preschool

Community Collaboration

- Head Start
- New Parent Network
- Public Health
- Developmental Disabilities
- Mental Health
- Community preschools
- DHS-Child Welfare
- Local Universities



Referral Process Review

- **Anyone** can make a referral
- Call local county contact per the Do You Have Concerns brochure.
- Observation and developmental screening
- If delays are suspected, evaluation is completed
 - EI – In all developmental areas
 - ECSE – In areas of suspected delay
- Eligibility
- Individual Family Service Plan (IFSP)
- IFSP defines goals and services

Questions?

